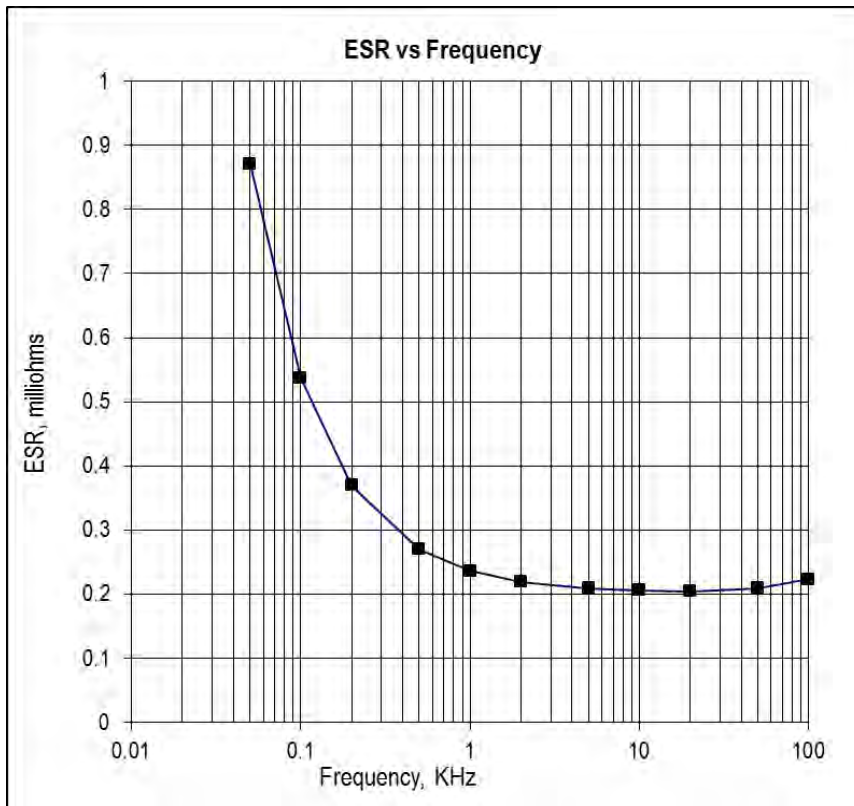


**Power Ring
Film Capacitor™
1000 μ F
700 VDC**



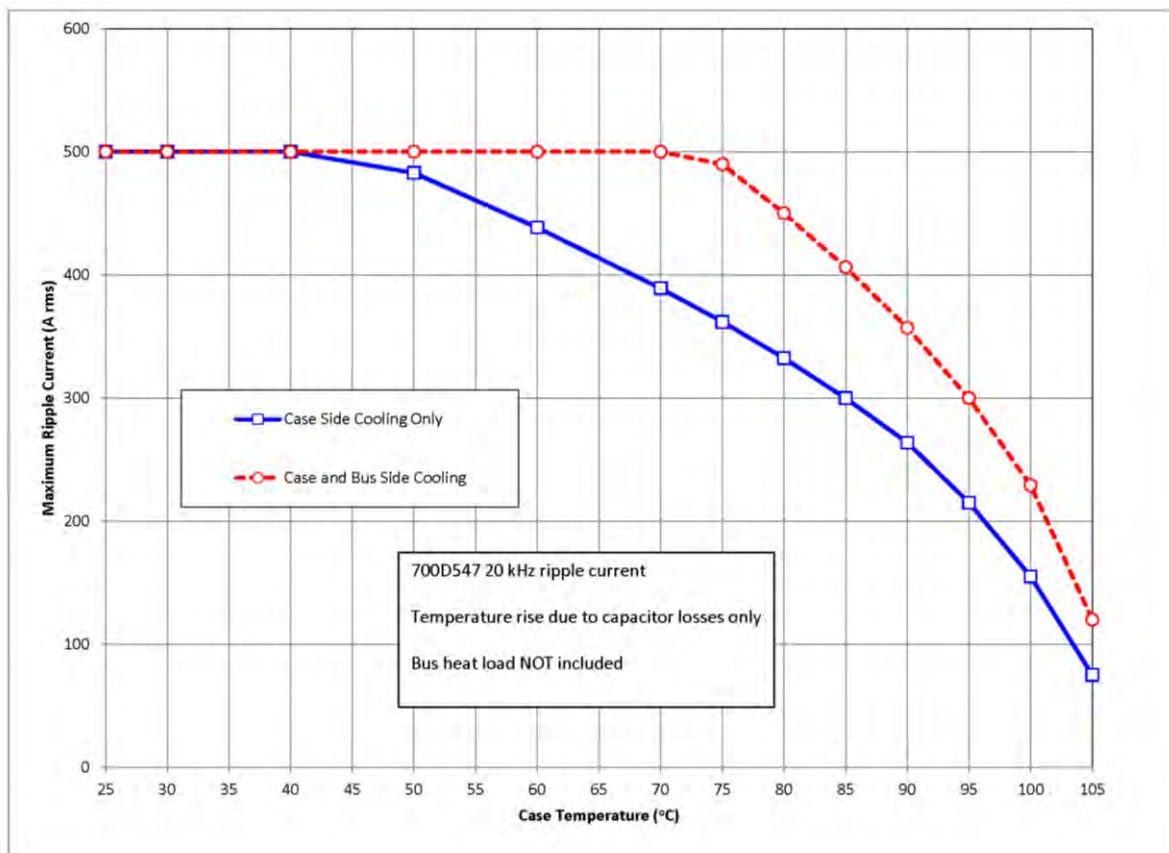
Electrical Specifications

SBE Part #:	700D10897-547
Capacitance/Tolerance:	1000 μ F \pm 10%
DC Voltage Rating:	700 VDC
Dielectric/Construction:	Metallized Polypropylene. Single section design.
Dielectric Withstand:	Unit 100% tested at DC potential of 950 Volts for two minutes at +25°C
Insulation Resistance:	100 M Ω Min at +25°C
ESR vs. Frequency:	



Electrical Specifications (cont'd)

ESL: Less than 5 nH in a suitable laminar bus structure.
Operating Temperature: -40°C to +85°C at full DC voltage rating
System Fault Current Rating (external to the capacitor): 7500 Amps maximum
Voltage, Current, Temperature De-rating: For applications above +85°C please contact SBE
RMS Current Rating:



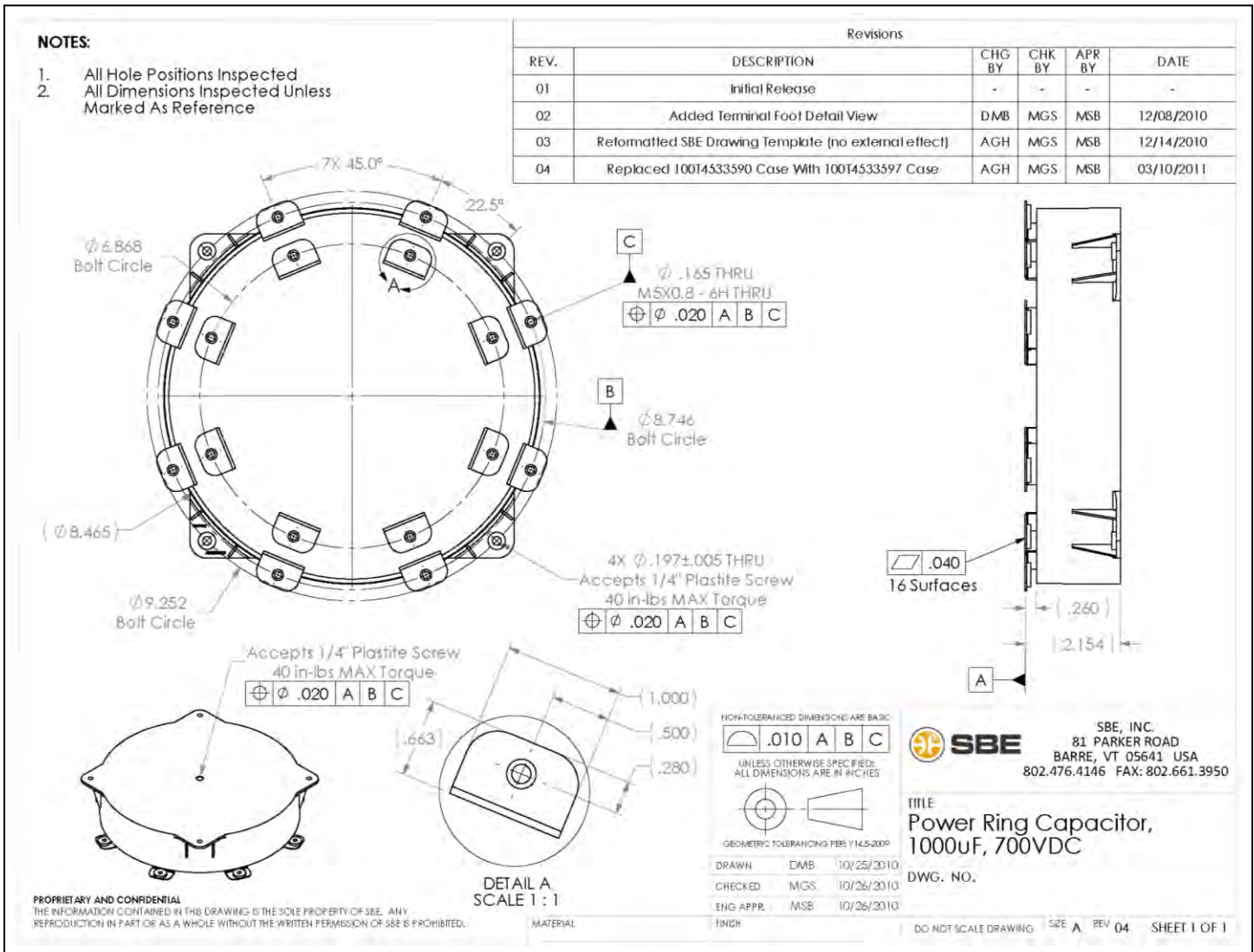
Mechanical Specifications

Dimensions: Refer to layout details on following page
Terminals: Matte Tin plated copper, 0.032" thick
Encapsulation: Polycarbonate outer housing, potted with RTV silicone

Marking:

SBE	SBE Company Identification
700D547	SBE Part Number
1000 μF ±10%	Capacitance value and tolerance
700 VDC	DC Voltage Rating
yyww-lot#-unit	Serial Number (date code, lot number, unit number)

Layout Details:



Contact SBE for further details. Thank you.

Rev. 12/1/11

SBE Inc., Power Ring Division
81 Parker Road • Barre, VT 05641 USA
Tel: 802-476-4146 • Fax: 802-661-3950
Email: PowerRing@SBElectronics.com
Web: www.SBElectronics.com



ISO 9001
QMI-SAI Global

At the *Leading Edge* of Film Capacitor Technology™