



Power Ring Film Capacitor™ 115 µF 1200 VDC



Electrical Specifications

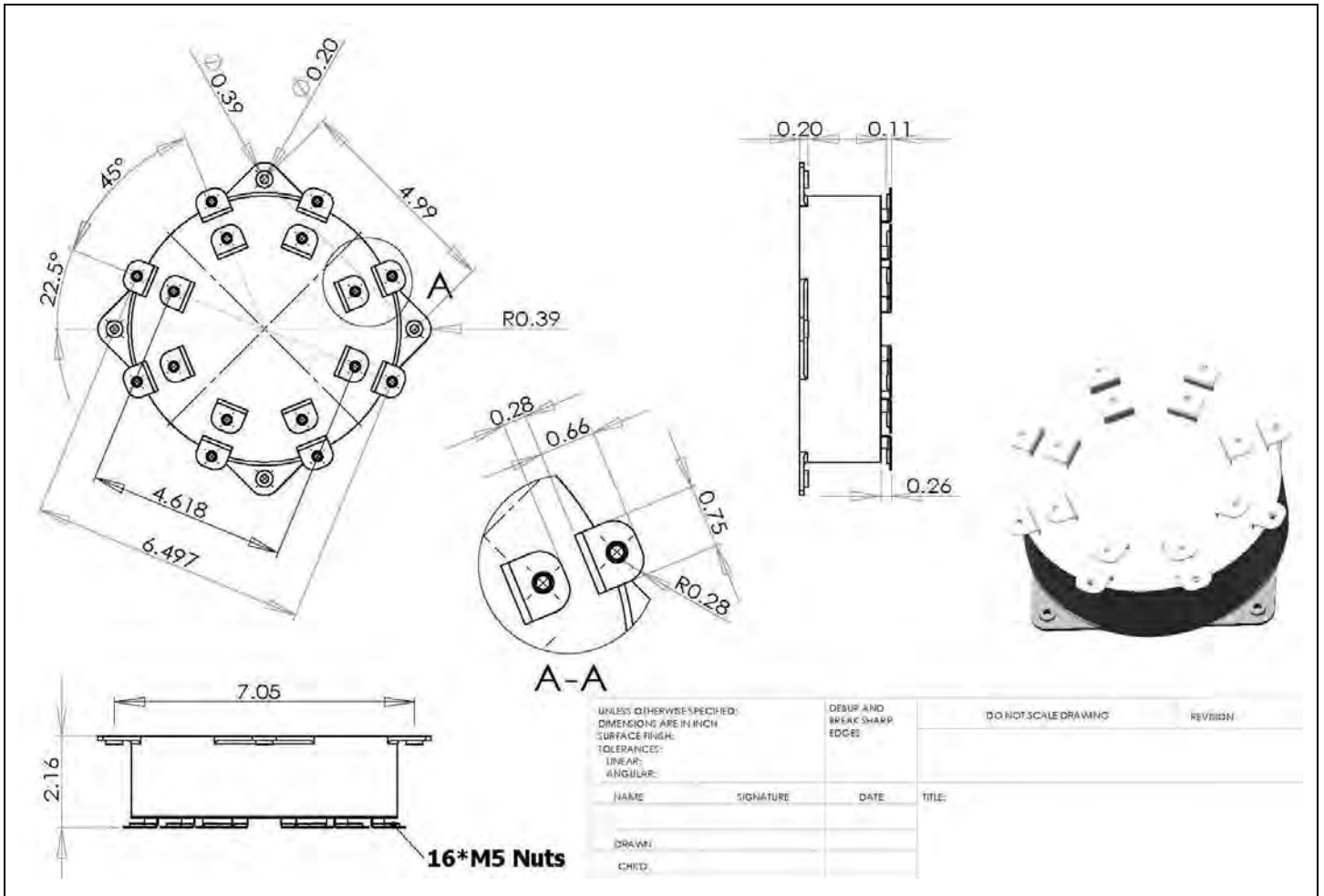
SBE Part #:	700D117912-408
Capacitance/Tolerance:	115 µF, ±10%
DC Voltage Rating:	1200 VDC
Dielectric/Construction:	Metallized Polypropylene. Single section design, non-inductively wound
Dielectric Withstand:	Unit shall withstand a DC potential of 1500 Volts for two minutes
Insulation Resistance:	870 MΩ Min at +25°C
ESR @ 100 KHz.:	< 0.46 milliohms
ESL:	Less than 5 nH. The actual capacitor loop inductance will depend on the application interconnect design
Operating Temperature:	-55°C to +85°C at full DC voltage rating
Peak Current Rating:	4000 Amps maximum
RMS Current Rating:	70 Amps RMS at +85°C. Assumes an approximate +10°C temperature rise from outer case to internal capacitor hot spot
Voltage, Current Temperature De-rating:	For applications above +85°C please contact SBE

Mechanical Specifications

Dimensions:	Refer to layout details
Terminals:	Tin plated copper, 0.032" thick
Encapsulation:	Polycarbonate outer housing, potted with RTV silicone
Mechanical Mounting:	It will be important to mount this unit using the 4 connection points of the plastic housing to provide stress relief for the terminals.

Marking:	SBE	SBE Company Identification
	700D408	SBE Part Number
	115 µF ±10%	Capacitance value and tolerance
	1200 VDC	DC Voltage Rating
	yyww-lot#-unit	12-digit serial number (date code, lot number, unit number)

Layout Details:



Contact SBE for further details. Thank you.

SBE Inc., Power Ring Division
 131 South Main St. • Barre, VT 05641 USA
Tel: 802-476-4146 • **Fax:** 802-476-4149
Email: PowerRing@SBElectronics.com
Web: www.SBElectronics.com



#SBE-PR-408-05/10

At the *Leading Edge* of Film Capacitor Technology™