



## Power Ring Film Capacitor™ 225 $\mu$ F 1200 VDC



### Electrical Specifications

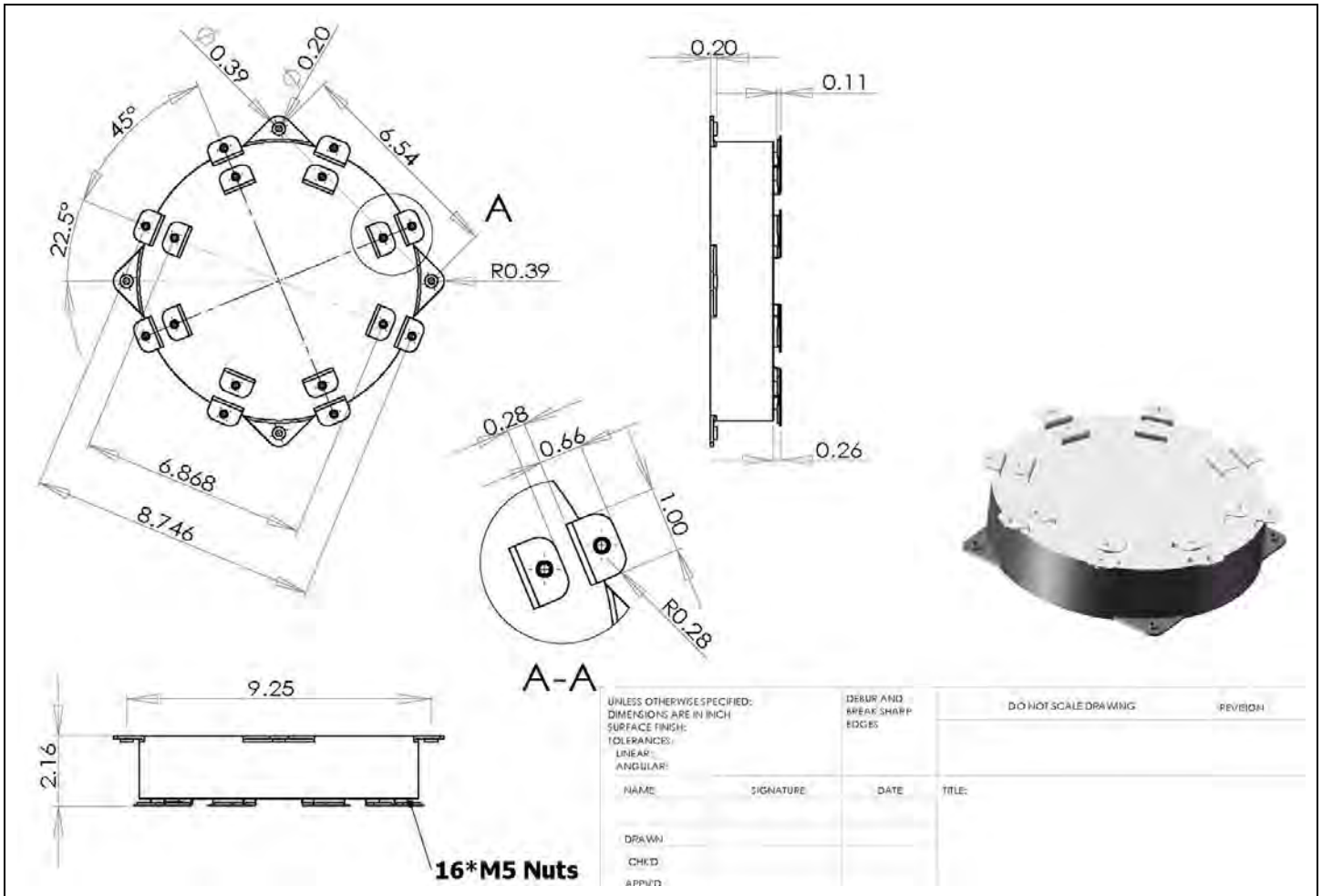
<b>SBE Part #:</b>	700D227912-409
<b>Capacitance/Tolerance:</b>	225 $\mu$ F, $\pm$ 10%
<b>DC Voltage Rating:</b>	1200 VDC
<b>Dielectric/Construction:</b>	Metallized Polypropylene. Single section design, non-inductively wound
<b>Dielectric Withstand:</b>	Unit shall withstand a DC potential of 1500 Volts for two minutes
<b>Insulation Resistance:</b>	445 M $\Omega$ Min at +25°C
<b>ESR @ 100 KHz.:</b>	< 0.24 milliohms
<b>ESL:</b>	Less than 5 nH. The actual capacitor loop inductance will depend on the application interconnect design
<b>Operating Temperature:</b>	-55°C to +85°C at full DC voltage rating
<b>Peak Current Rating:</b>	7500 Amps maximum
<b>RMS Current Rating:</b>	150 Amps RMS at +85°C. Assumes an approximate +10°C temperature rise from outer case to internal capacitor hot spot
<b>Voltage, Current Temperature De-rating:</b>	For applications above +85°C please contact SBE

### Mechanical Specifications

<b>Dimensions:</b>	Refer to layout details
<b>Terminals:</b>	Tin plated copper, 0.032" thick
<b>Encapsulation:</b>	Polycarbonate outer housing, potted with RTV silicone
<b>Mechanical Mounting:</b>	It will be important to mount this unit using the 4 connection points of the plastic housing to provide stress relief for the terminals.

<b>Marking:</b>	SBE	SBE Company Identification
	700D409	SBE Part Number
	225 $\mu$ F $\pm$ 10%	Capacitance value and tolerance
	1200 VDC	DC Voltage Rating
	yyww-lot#-unit	12-digit serial number (date code, lot number, unit number)

# Layout Details:



Contact SBE for further details. Thank you.

**SBE Inc., Power Ring Division**  
 131 South Main St. • Barre, VT 05641 USA  
**Tel:** 802-476-4146 • **Fax:** 802-476-4149  
**Email:** [PowerRing@SBElectronics.com](mailto:PowerRing@SBElectronics.com)  
**Web:** [www.SBElectronics.com](http://www.SBElectronics.com)



#SBE-PR-409-05/10

**At the *Leading Edge* of Film Capacitor Technology™**