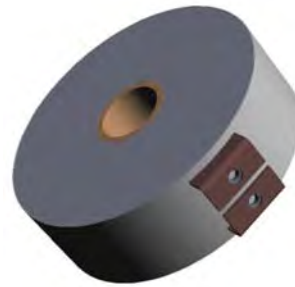




Power Ring Film Capacitor™ 150 μ F, 800 VDC Technical Data Sheet



Electrical Specifications

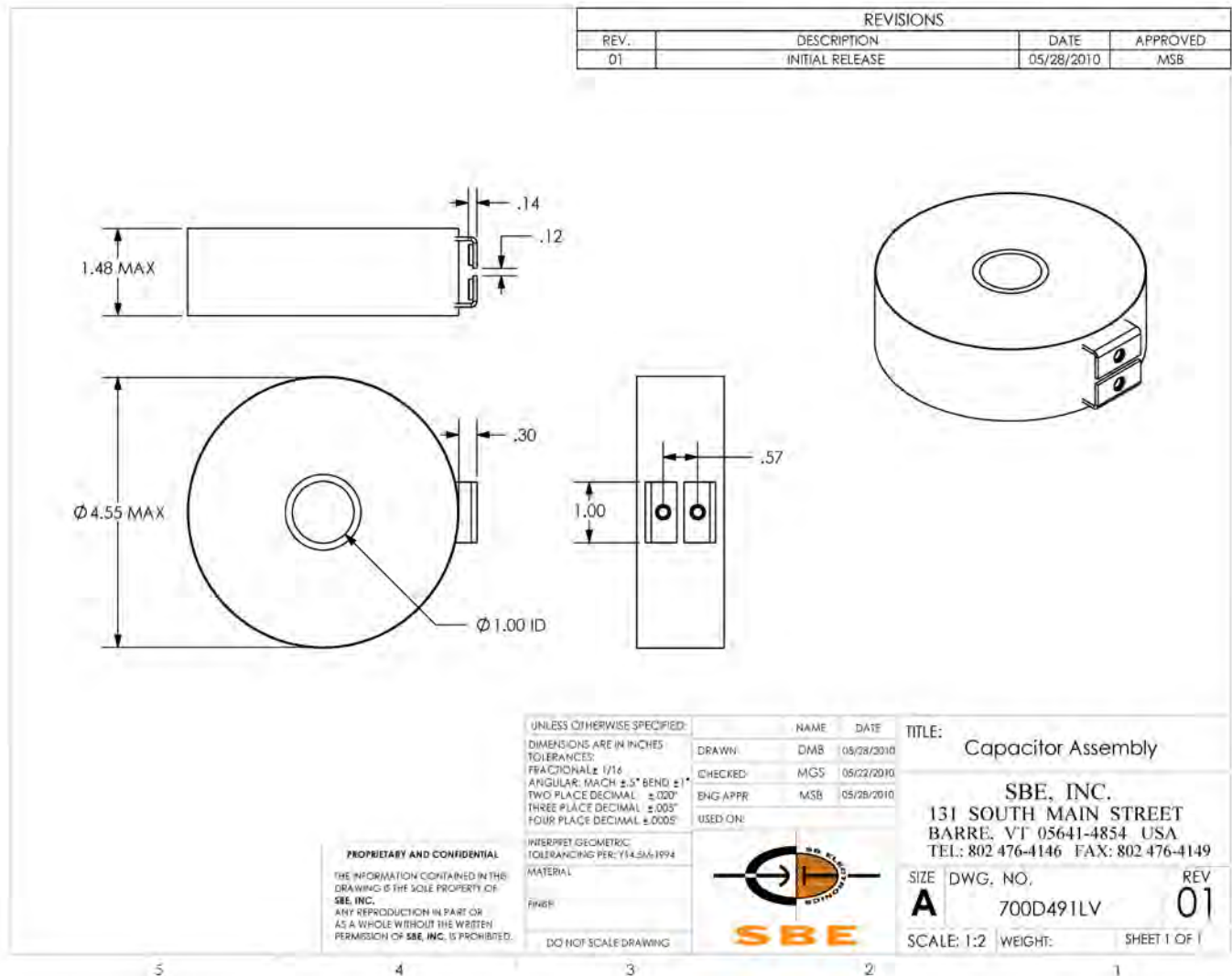
Capacitance/Tolerance:	150 μ F, \pm 10%
DC Voltage Rating:	800 VDC
Dielectric/Construction:	Metallized Polypropylene film. Single section design, non-inductively wound.
Dielectric Withstand Voltage:	Unit shall withstand a DC potential of 900 Volts for two minutes.
Maximum Surge Voltage:	Units should not be exposed to a surge voltage greater than 900 Volts
Insulation Resistance:	667 M Ω Min at +25°C
ESR @ 10 KHz.:	< 0.5 milliohm, typical
ESL:	< 15 nH. The actual capacitor loop inductance will depend on the application interconnect design.
Operating Temperature:	-40°C to +85°C
Peak Current Rating:	9000 Amps Repetitive
RMS Current Rating:	50 Amps RMS. Assumes a terminal temperature < 85°C and an approximate +5°C temperature rise to internal capacitor hot spot

Mechanical Specifications

Diameter (DIA):	4.55" Max
Thickness (T)	1.48" Max
Core:	Hollow phenolic core with 1.0" I.D. Meets UL-94HB specifications
Core extension:	None. Core is flush with end fill surface
Terminals:	Tin plated copper strap, 1/16" thick by 1" wide with M5 captive nuts
Encapsulation:	Outer tape wrap of flame retardant polyester tape (meets UL510 specifications). Potted with white epoxy (meets UL94V-0 specs)
Mechanical Mounting:	If possible mounting of this unit using the core will help to provide stress relief for the terminals.

Marking:	SBE 700D491 150 μ F \pm 10% 800 VDC yyww-lot#-unit	SBE Company Identification Unique SBE Part Number Capacitance value and tolerance DC Voltage Rating 12 digit serial number; includes weekly date code, lot number and unit number
-----------------	--	---

Dimension Details



Rev. 5/26/10

SBE Inc., Power Ring Division
 131 South Main St. • Barre, VT 05641 USA
Tel: 802-476-4146 • **Fax:** 802-476-4149
Email: PowerRing@SBElectronics.com
Web: www.SBElectronics.com



ISO 9001
 OMI-SAI Global

At the *Leading Edge* of Film Capacitor Technology™