

## Technical Data Sheet



### Electrical Specifications

**Capacitance/Tolerance:** 75  $\mu$ F,  $\pm$ 10%

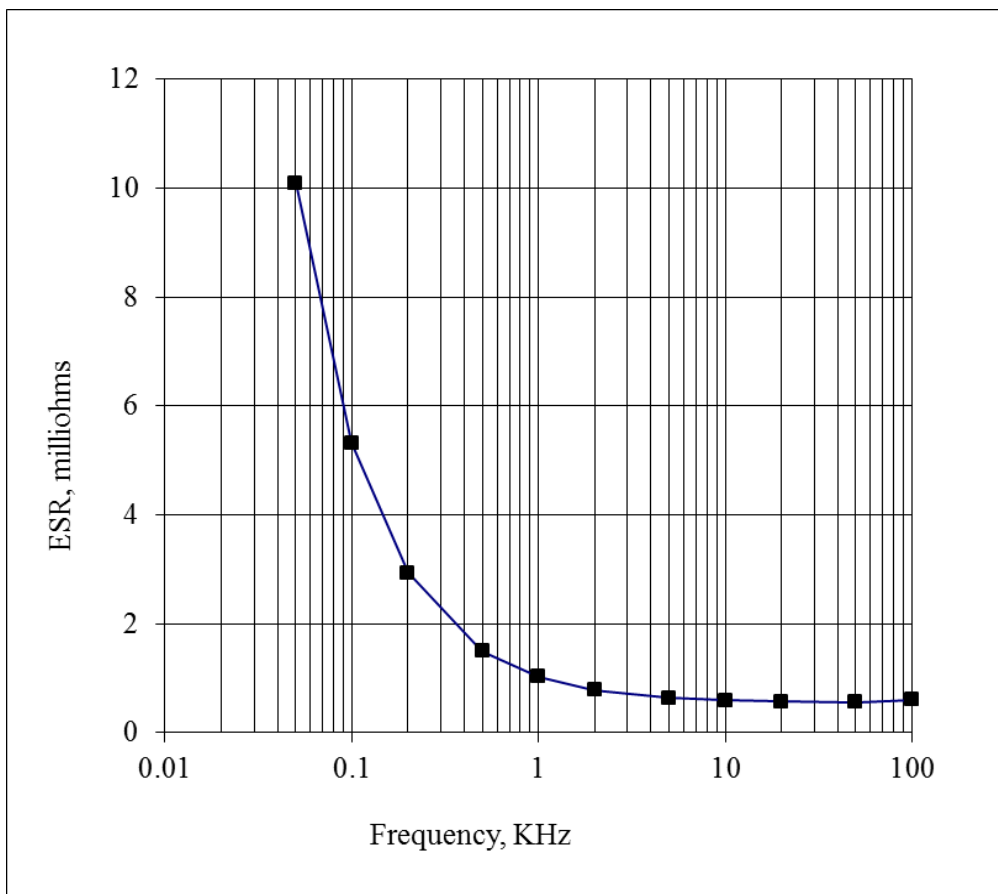
**DC Voltage Rating:** 1500 VDC

**Dielectric/Construction:** Metallized Polypropylene film. Single section design

#### Dielectric

**Withstand Voltage:** Units 100% tested at a DC potential of 1875 Volts for two minutes at +25°C

#### ESR vs. Frequency:



## Electrical Specifications (cont'd)

**ESL:** Less than 5 nH in a suitable laminar bus structure

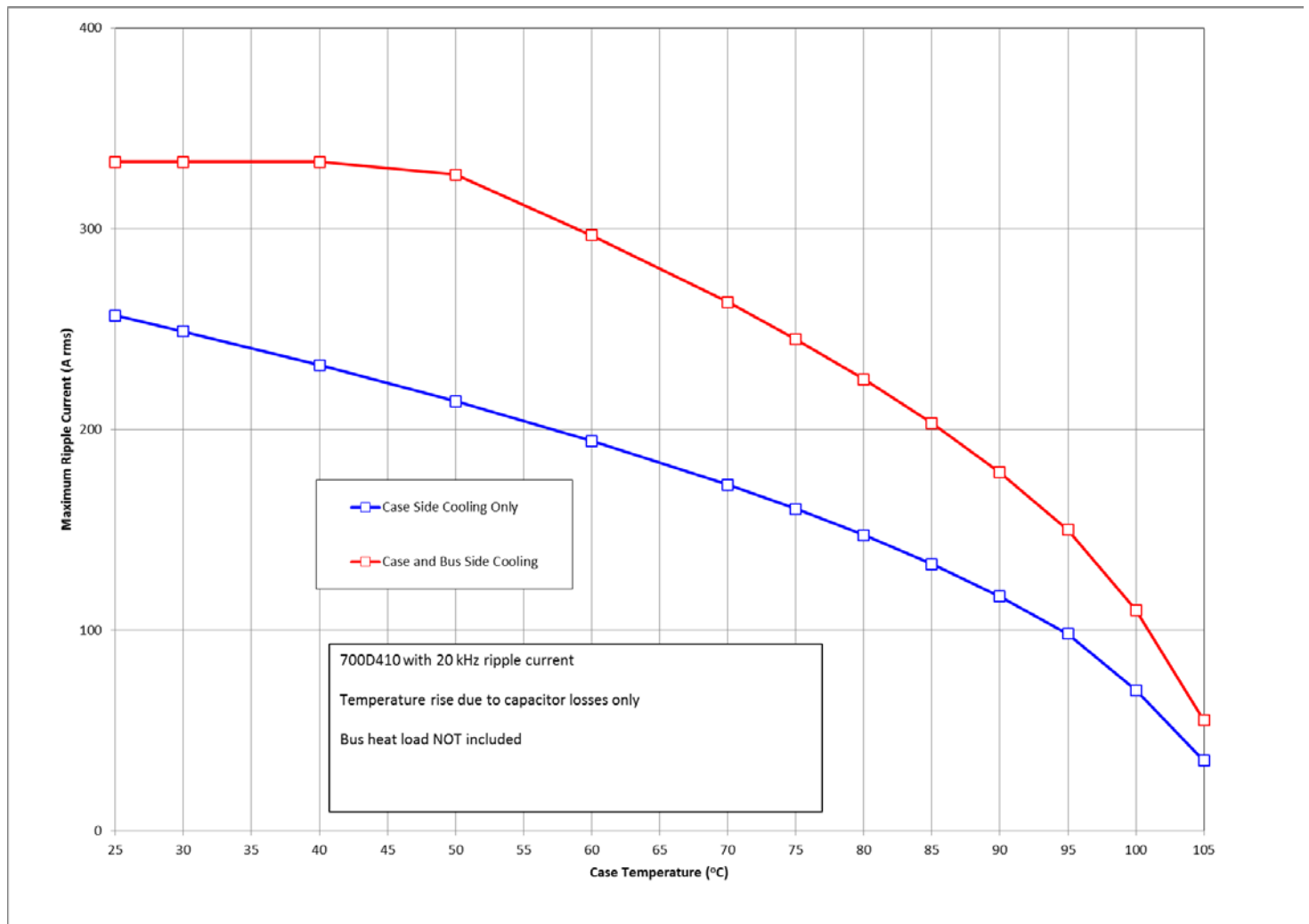
**Thermal resistance:** 1.48°C/W (case side cooling only)  
0.67°C/W (case and bus side cooling)

**Operating Temperature:** -40°C to +85°C at full DC voltage rating

**Voltage, Temperature De-rating:** De-rate voltage linearly to 1300 Volts from +85°C to +107°C, with respect to hotspot temperature

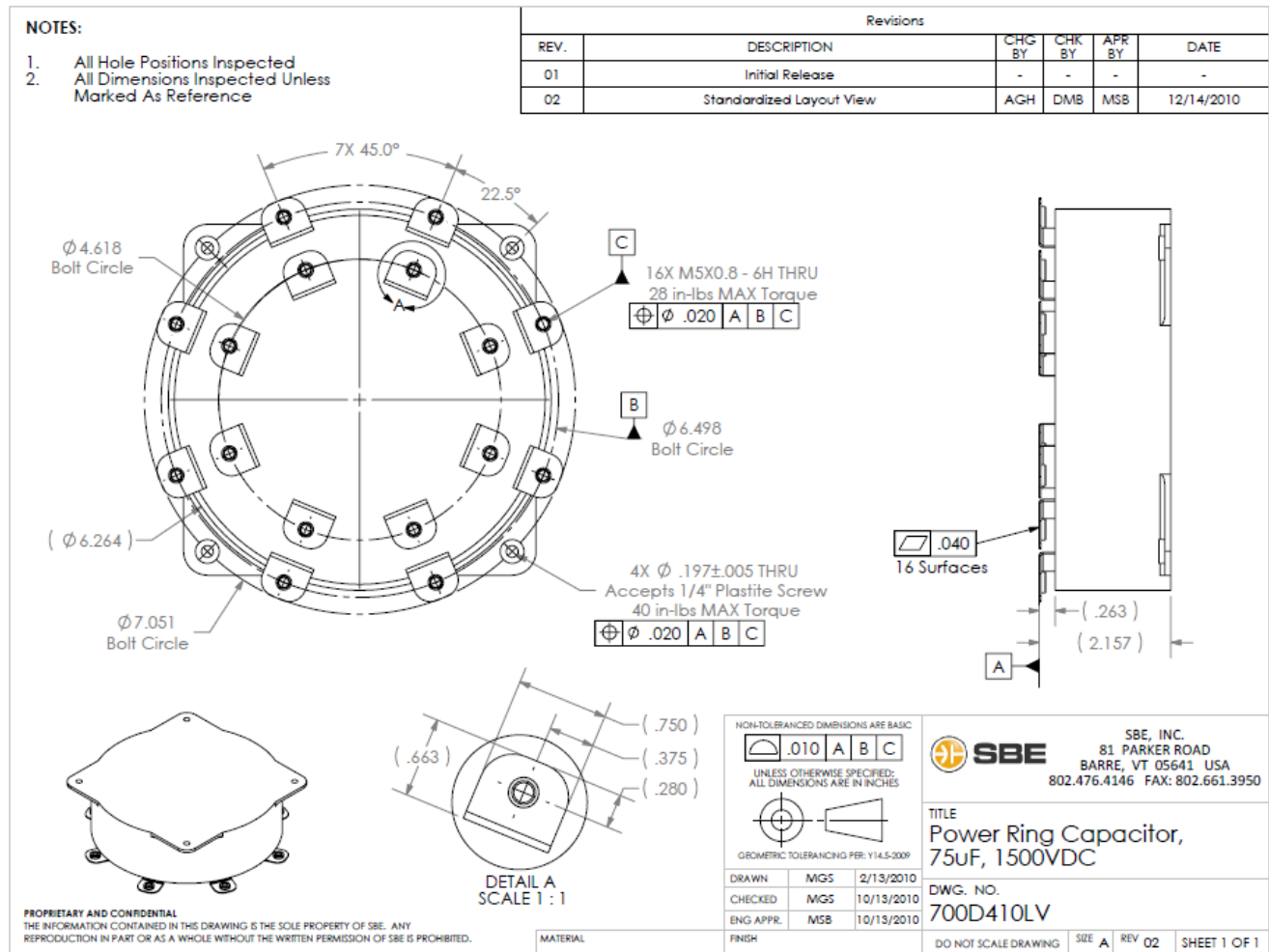
**System Fault Current Rating:** 10,000 Amps maximum (external to the capacitor)

**RMS Current Rating:**



# Mechanical Specifications

<b>Dimensions:</b>	See Layout Drawing below for details.	
<b>Terminals:</b>	Tin plated copper, 0.032" thick	
<b>Encapsulation:</b>	Molded polymeric case potted with RTV silicone	
<b>Marking:</b>	SBE 700D410 75 $\mu$ F $\pm$ 10% 1500 VDC yyww-lot#-unit	SBE Company Identification Unique SBE Part Number Capacitance value and Tolerance DC Voltage Rating Serial Number (date code, lot number, unit number)



Rev. 1/21/13  
**SBE Inc., Power Ring Division**  
 81 Parker Road • Barre, VT 05641 USA  
 Tel: 802-476-4146 • Fax: 802-661-3950  
 Email: [PowerRing@SBElectronics.com](mailto:PowerRing@SBElectronics.com)  
 Web: [www.SBElectronics.com](http://www.SBElectronics.com)



ISO 9001  
QMI-SAI Global

**At the *Leading Edge* of Film Capacitor Technology™**