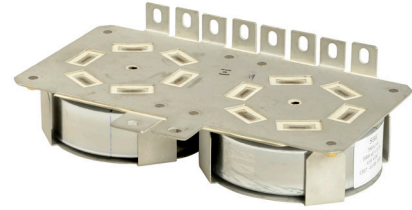


Power Ring Film Capacitor™ 1000 µF, 450 Vdc

The 700A10894-144 Power Ring is a 450 Vdc, 1000 µF DC Link Capacitor with an ESR of 110 micro-Ohms at 20 kHz and an ESL of 15 nH.



Electrical Specifications

SBE Part #: 700A10894-144

Capacitance/Tolerance: 1000 µF ±10%

DC Voltage Rating: 450 Vdc

Dielectric/Construction: Metallized polypropylene film. Dual windings integrated to a laminar bus

Dielectric Withstand Voltage: Units 100% tested at DC voltage of 560 Volts for 2 minutes at 25°C

ESL at Output Tabs: Less than 15 nH for unit as shown (value does not include effects from any additional hardware, bus adaptor, etc.)

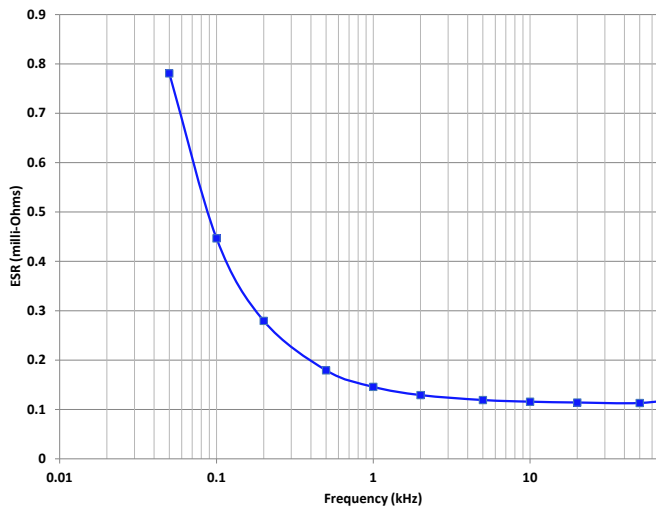
Thermal Resistance: 1°C/W

Operating Temperature: -40°C to +85°C
hotspot temperature at full DC voltage rating

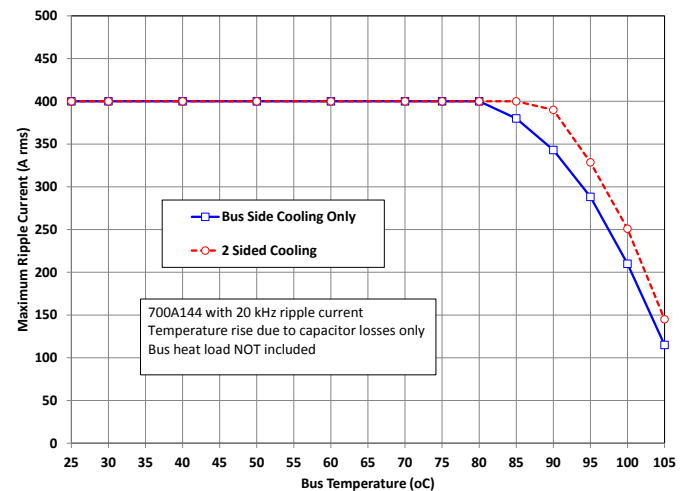
Voltage, Temperature De-rating: De-rate voltage linearly to 300 Volts from +85°C to +105°C,

System Fault Current Rating: 3,000 Amps maximum (external to the capacitor)

Typical ESR vs. Frequency:



RMS Current Rating:



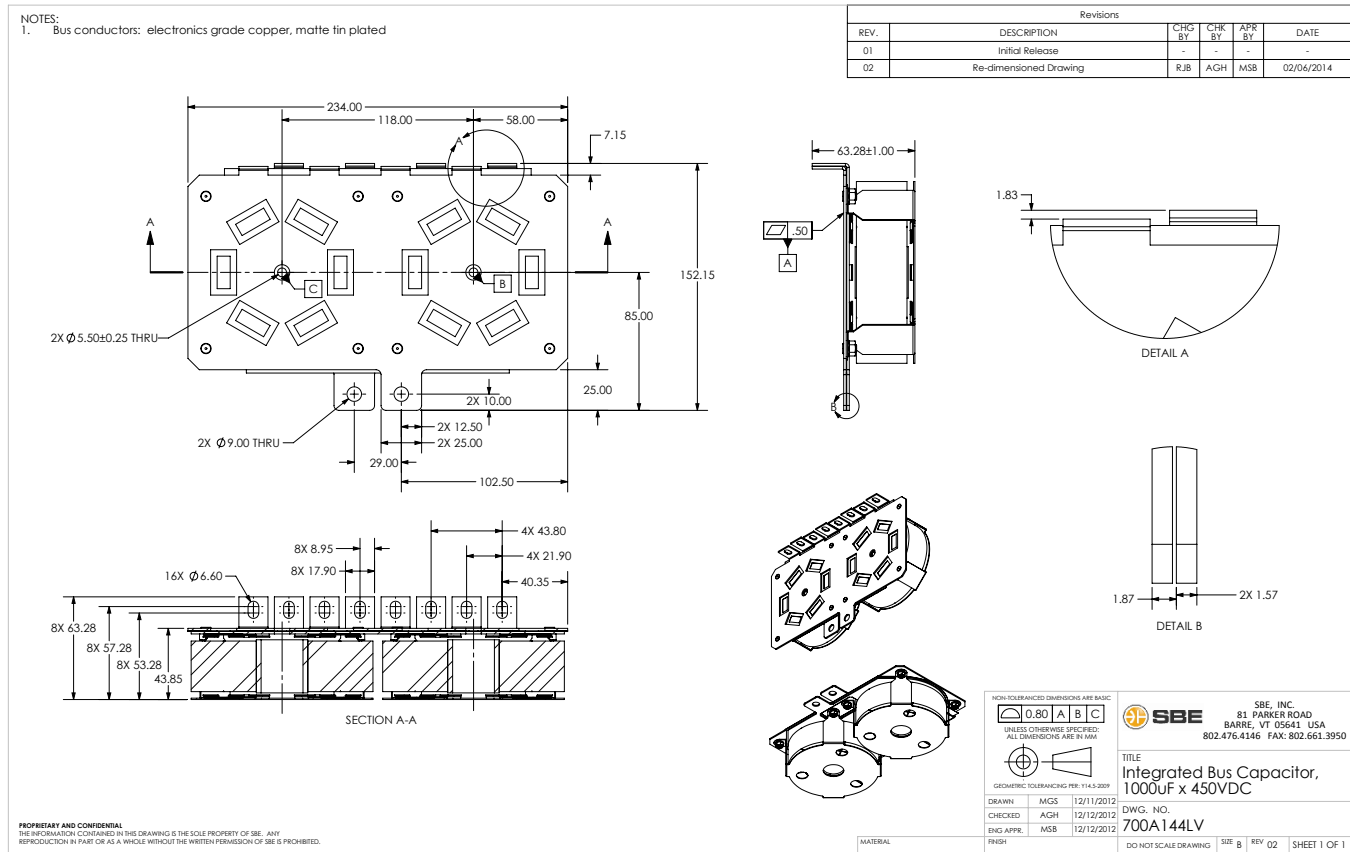
Mechanical Specifications

Dimensions: See layout drawing for details
Bus/Terminals Tabs: Tin plated copper, 0.062" thick
Encapsulation: Un-encapsulated

Marking: SBE Inc.
 700A144
 1000 μ F \pm 10%
 450 Vdc
 yyyy-lot#-unit

SBE company identification
 Unique SBE part number
 Capacitance value and tolerance
 DC voltage rating
 Serial number (date code, lot number, unit number)

Layout Details:



Contact SBE Inc. to discuss your specific requirements.

SBE reserves the right to amend design data