

## Power Ring Film Capacitor™ 600 $\mu$ F, 700 Vdc

The 700A60797-180 Power Ring assembly is a 700 Vdc, 600  $\mu$ F dual winding DC Link Capacitor integrated with a laminated bus with an ESR of 330 micro-Ohms at 20 kHz and an ESL less than 5 nH.



### Electrical Specifications

**SBE Part #:** 700A60797-180

**Capacitance/Tolerance:** 600  $\mu$ F  $\pm$ 10%

**DC Voltage Rating:** 700 Vdc

**Dielectric/Construction:** Metallized polypropylene film. Dual windings integrated to a laminar bus.

**Dielectric Withstand Voltage:** Units 100% tested at DC voltage of 950 Vdc for 2 minutes at 25°C

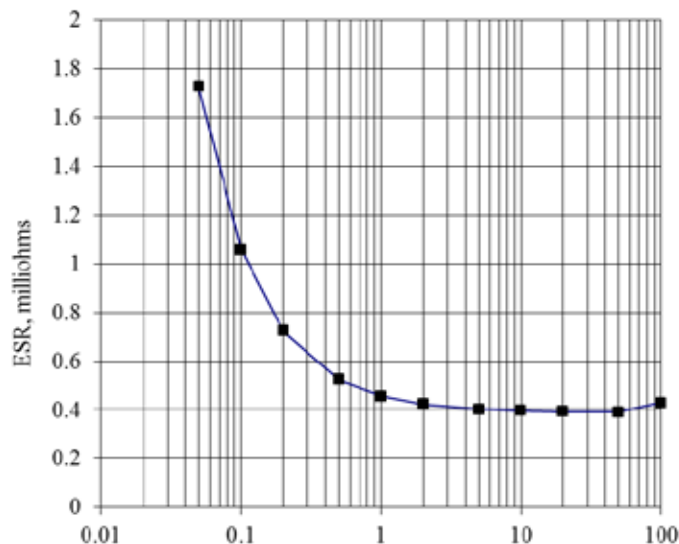
**ESL at Output Tabs:** Less than 5 nH for unit as shown (value does not include effects from any additional hardware, bus adaptor, etc.)

**Operating Temperature:** -40°C to +85°C  
hotspot temperature at full DC voltage rating

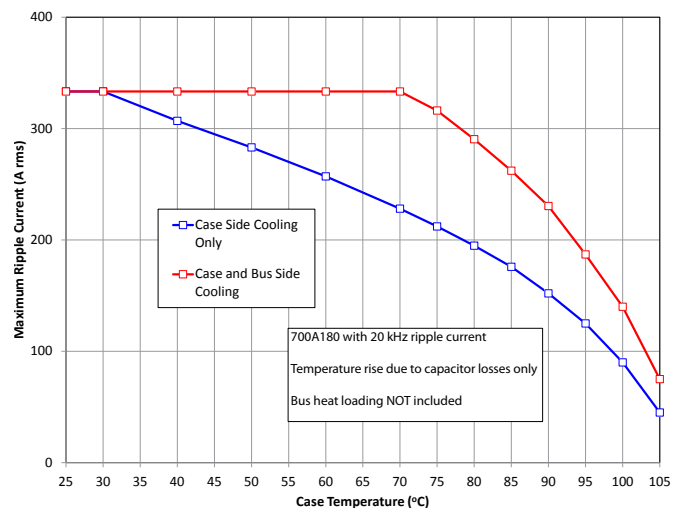
**Voltage, Temperature De-rating:** De-rate voltage linearly to 500 Vdc from +85°C to +105°C, with respect to hotspot temperature

**System Fault Current Rating:** 3,000 Amps maximum (external to the capacitor)

### Typical ESR vs. Frequency:



### RMS Current Rating:



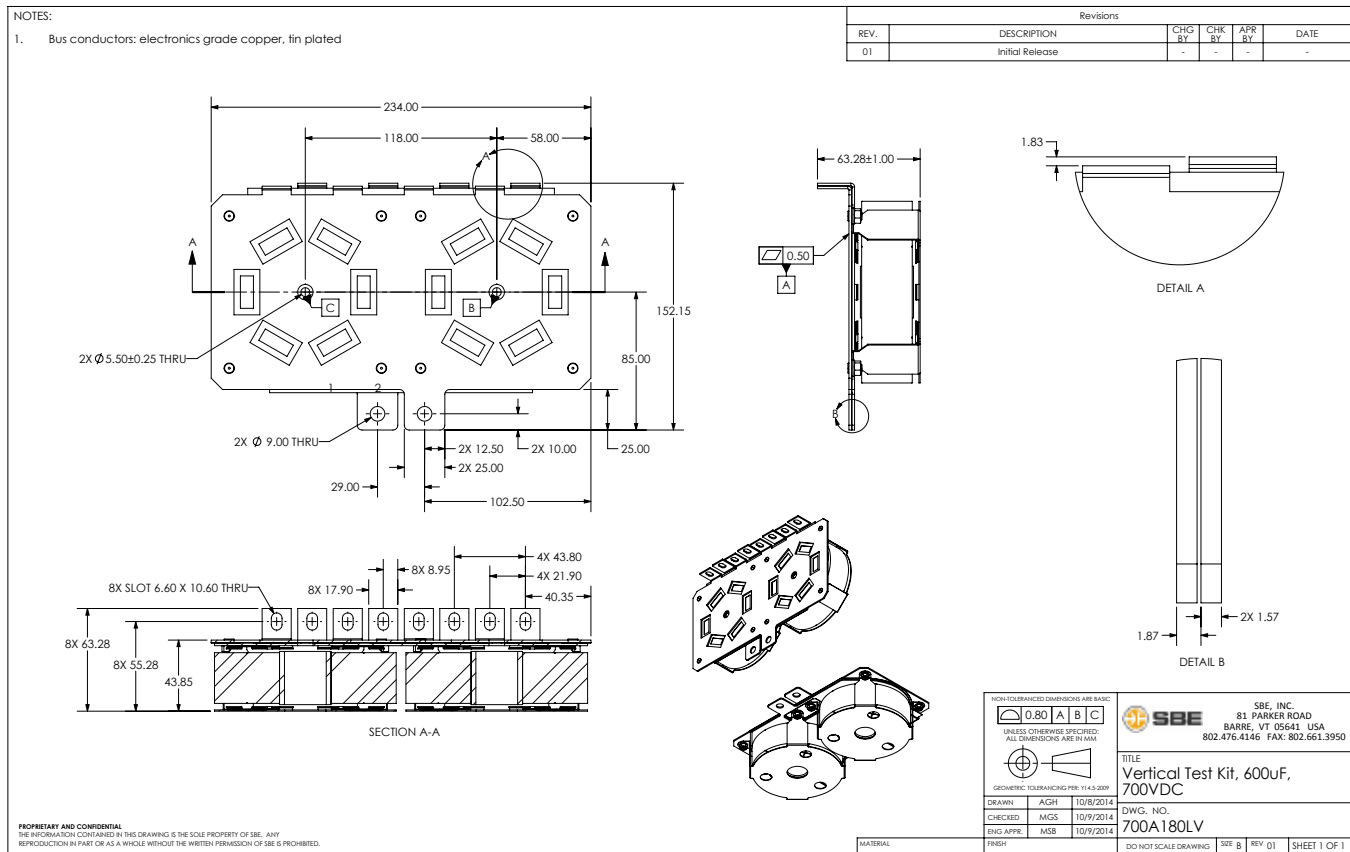
## Mechanical Specifications

**Dimensions:** See layout drawing for details  
**Bus:** Tin plated copper, 0.062" thick  
**Terminals:** Tin plated copper, 0.031" thick  
**Encapsulation:** Un-encapsulated

**Marking:** SBE  
 700A180  
 600  $\mu$ F  $\pm$ 10%  
 700 Vdc  
 yyww-lot#-unit

SBE company identification  
 SBE "short form" part number  
 Capacitance value and tolerance  
 DC voltage rating  
 Serial number (date code, lot number, unit number)

## Layout Details:



Contact SBE Inc. to discuss your specific requirements.

SBE reserves the right to amend design data