

Power Ring Film Capacitor™ 375 μ F, 900 Vdc

The 700A37799-181 Power Ring assembly is a 900 Vdc, 375 μ F dual winding DC Link Capacitor integrated with a laminated bus with an ESR of 320 micro-Ohms at 20 kHz and an ESL less than 5 nH.



Electrical Specifications

SBE Part #: 700A37799-181

Capacitance/Tolerance: 375 μ F \pm 10%

DC Voltage Rating: 900 Vdc

Dielectric/Construction: Metallized polypropylene film. Dual windings integrated to a laminar bus.

Dielectric Withstand Voltage: Units 100% tested at DC voltage of 1,125 Vdc for 2 minutes at 25°C

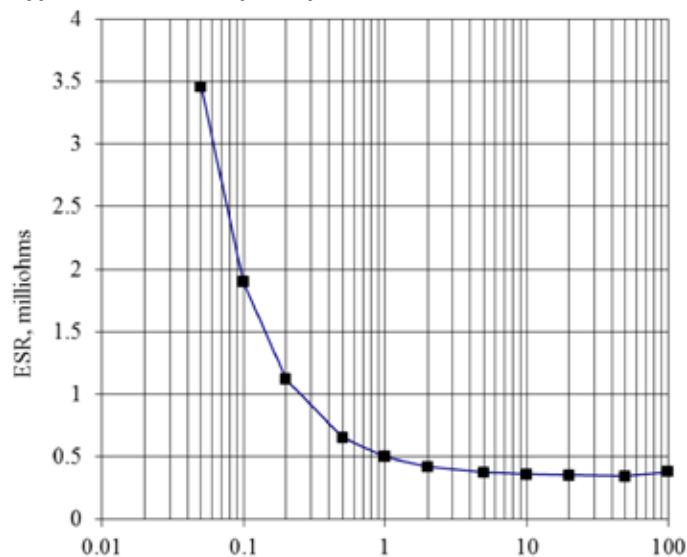
ESL at Output Tabs: Less than 5 nH for unit as shown (value does not include effects from any additional hardware, bus adaptor, etc.)

Operating Temperature: -40°C to +85°C
hotspot temperature at full DC voltage rating

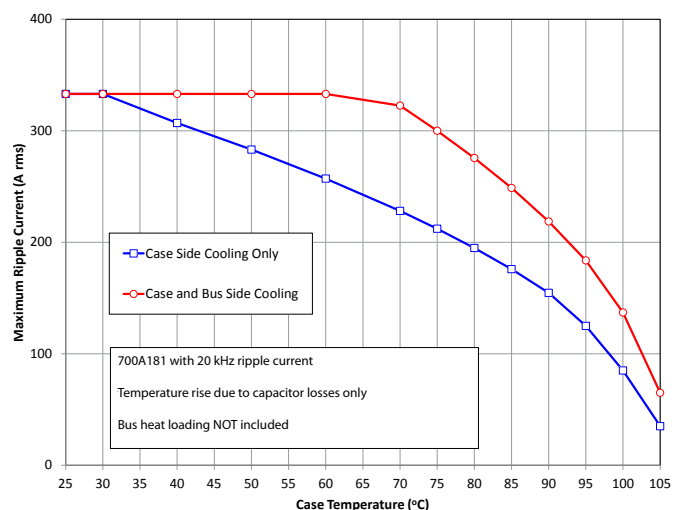
Voltage, Temperature De-rating: De-rate voltage linearly to 700 Vdc from +85°C to +105°C, with respect to hotspot temperature

System Fault Current Rating: 3,000 Amps maximum (external to the capacitor)

Typical ESR vs. Frequency:



RMS Current Rating:



SBE reserves the right to amend design data

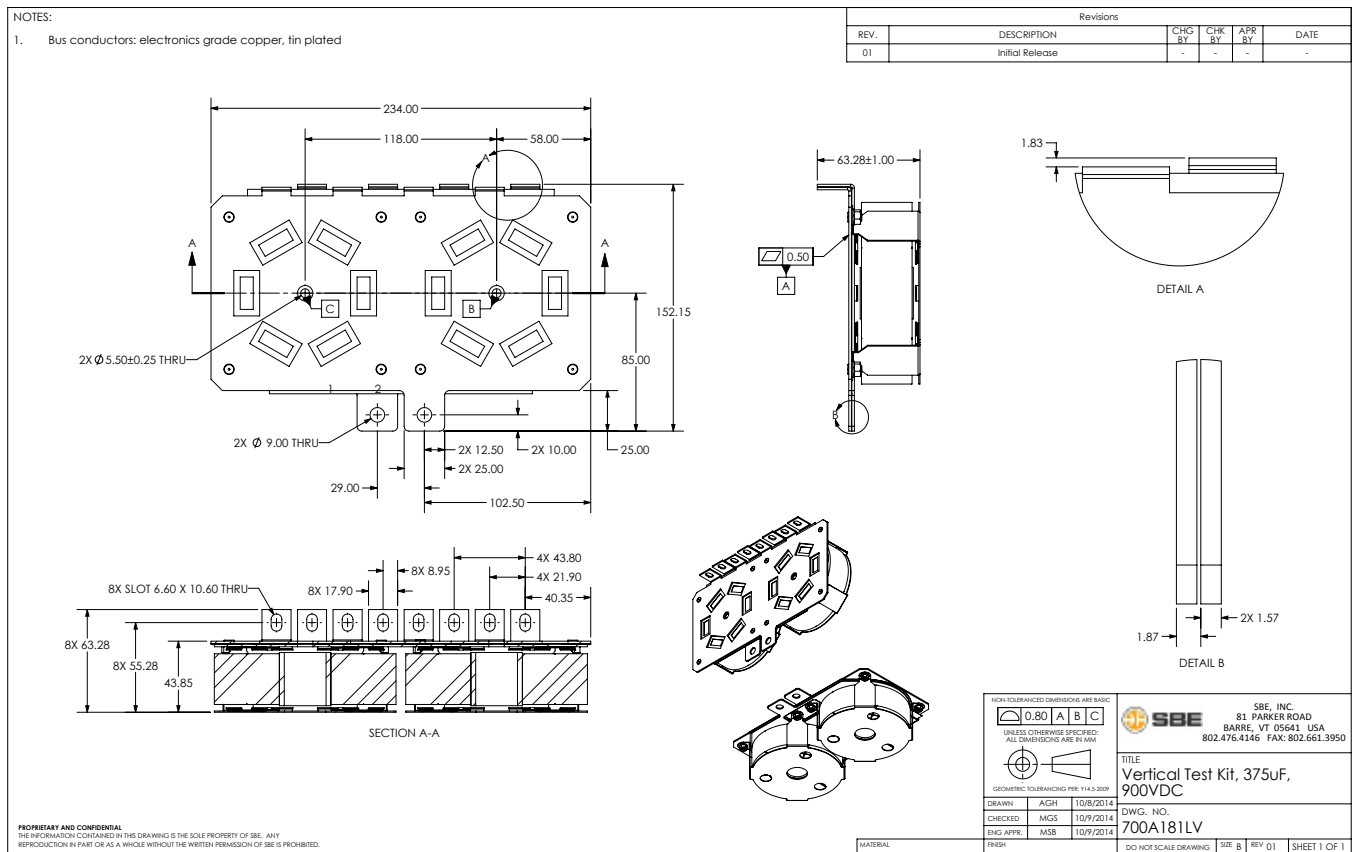
Mechanical Specifications

Dimensions: See layout drawing for details
Bus: Tin plated copper, 0.062" thick
Terminals: Tin plated copper, 0.031" thick
Encapsulation: Un-encapsulated

Marking: SBE
 700A181
 375 μ F \pm 10%
 900 Vdc
 yyww-lot#-unit

SBE company identification
 SBE "short form" part number
 Capacitance value and tolerance
 DC voltage rating
 Serial number (date code, lot number, unit number)

Layout Details:



Contact SBE Inc. to discuss your specific requirements.

SBE reserves the right to amend design data