

Power Ring Film Capacitor™ 3000 µF, 1100 Vdc

The 700A308911-242 Power Ring is a 1100 Vdc, 3000 µF DC Link Capacitor integrated with a laminar bus. The assembly has an ESR of 125 micro-Ohms at 20kHz and an ESL of 6-8nH.

An available adapter is required for connection to the popular "half bridge" designs. (Note: 600, 1100, 1200, 1500 Vdc versions also available.)



Electrical Specifications

SBE Part #:	700A308911-242
Capacitance/Tolerance:	3000 µF ±10%
DC Voltage Rating:	1100 Vdc
Dielectric:	Metallized polypropylene film
Dielectric Withstand Test Voltage:	Units 100% tested at DC potential of 1275 Vdc for two minutes at 25°C

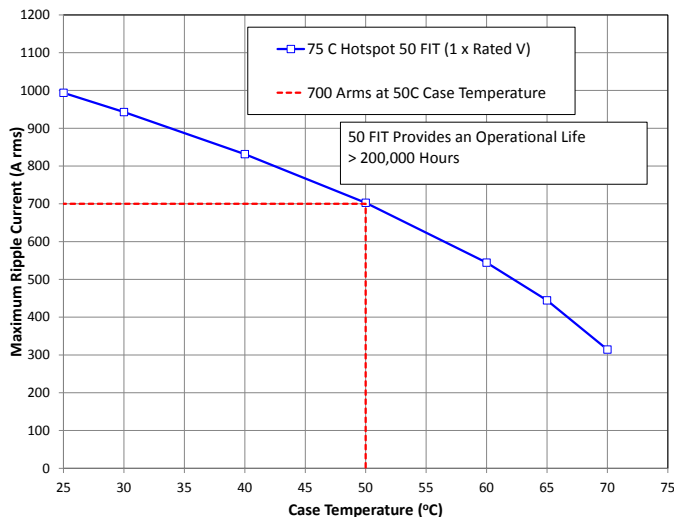
ESL at IGBT Terminals: 6-8 nH

Thermal Resistance: 0.34°C/W (case side cooling only)
0.17°C/W (case and bus side cooling only)

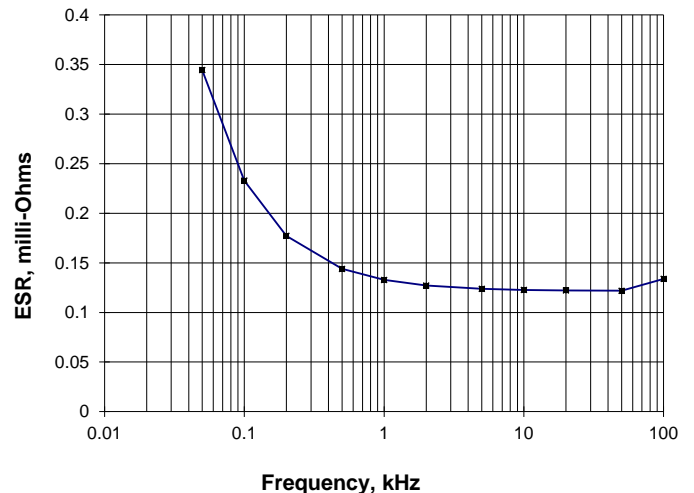
Operating Temperature: -40°C to +105°C

Continuous DC Voltage Rating: 1100 Vdc up to 85°C
(de-rate linearly from 1100 Vdc to 725 Vdc from 85°C to 105°C)

RMS Current Rating:



Typical ESR vs. Frequency:



Mechanical Specifications

Dimensions: See layout drawing for details

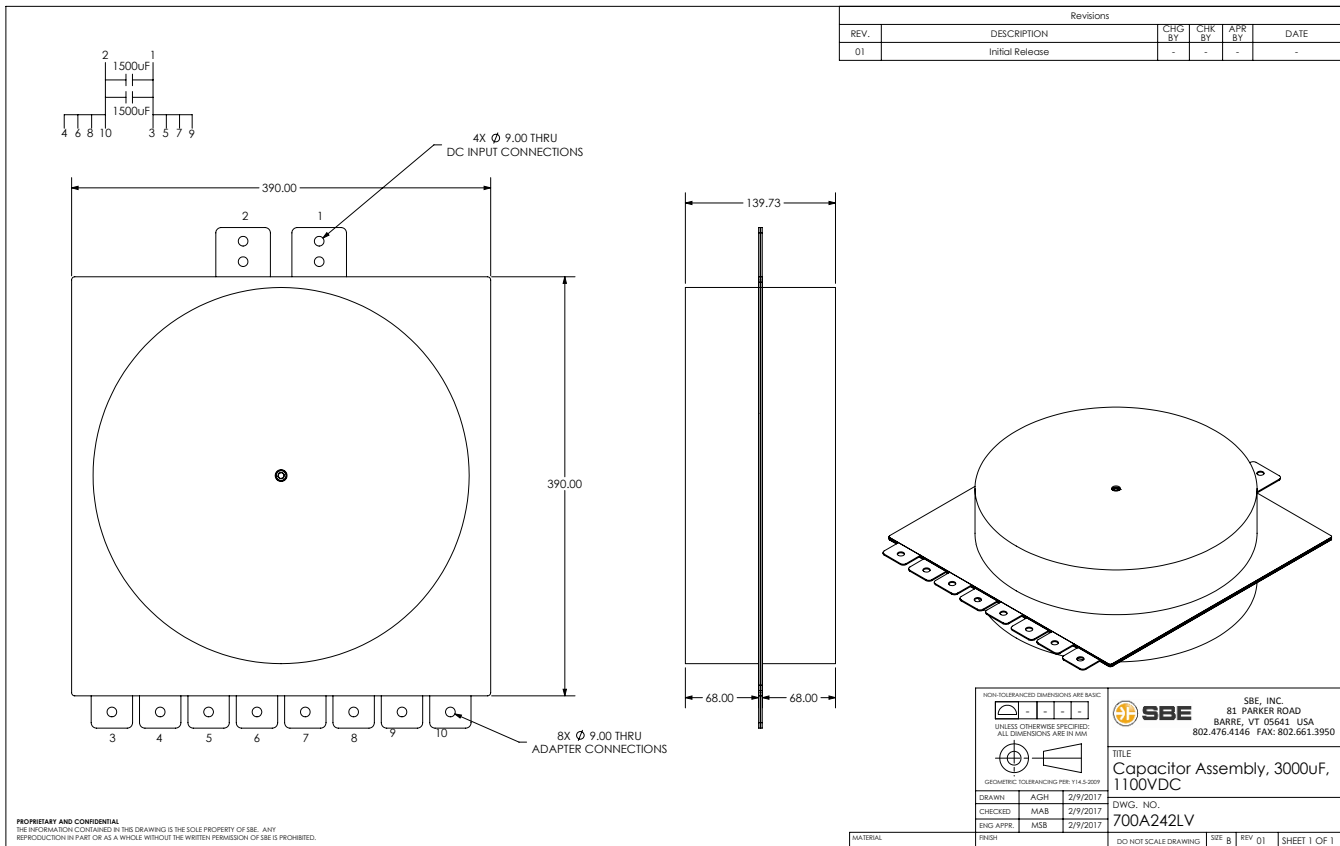
Bus Structure: Tin plated copper,
0.060" (1.50 mm) thick

Packaging: Polycarbonate plastic case

Construction: Dual windings integrated
back-to-back on a laminar bus

Marking:

SBE	SBE company identification
700A242	SBE "short form" part number
3000 μ F \pm 10%	Capacitance value and tolerance
1100 Vdc	DC voltage rating
yyww-lot#-unit	Serial number (date code, lot number, unit number)



Contact SBE Inc. to discuss your specific requirements.



#SBE-PR-700A242-03/17

SBE reserves the right to amend design data