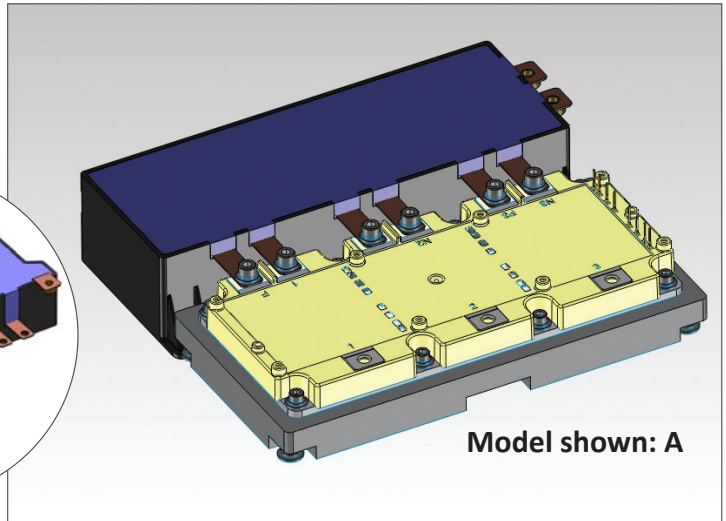
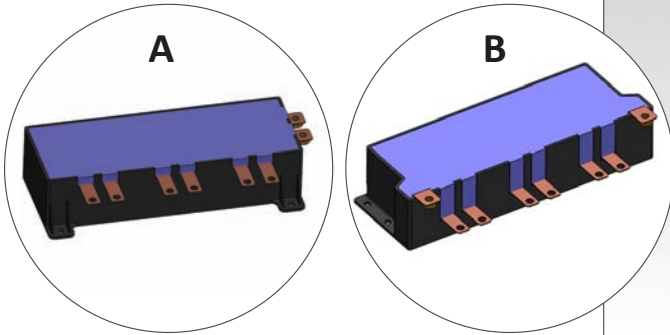


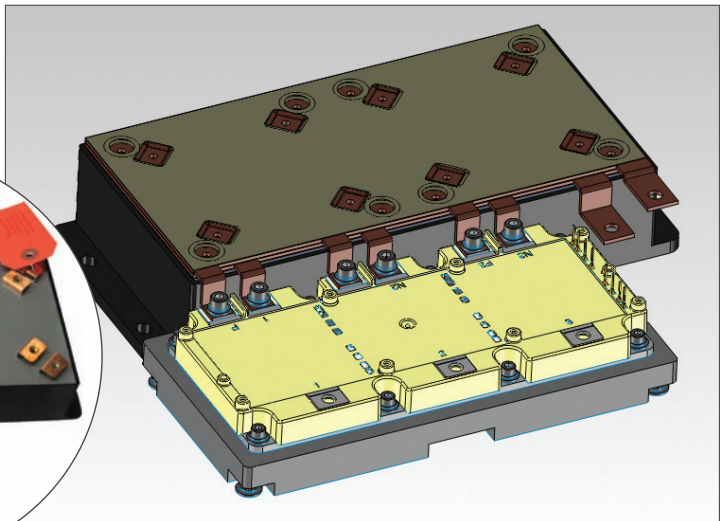
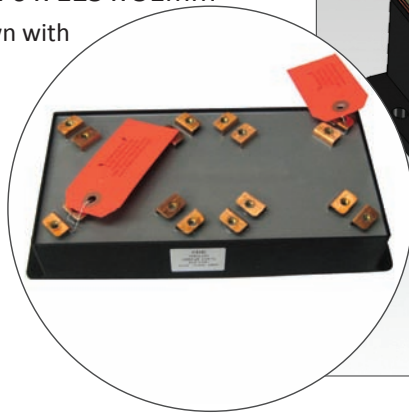
Power Ring with Rectangular Case

SBE Part #: 700A125
Description: 500 μ F – 450Vdc
Outline Dim.: 237 x 82 x 50mm

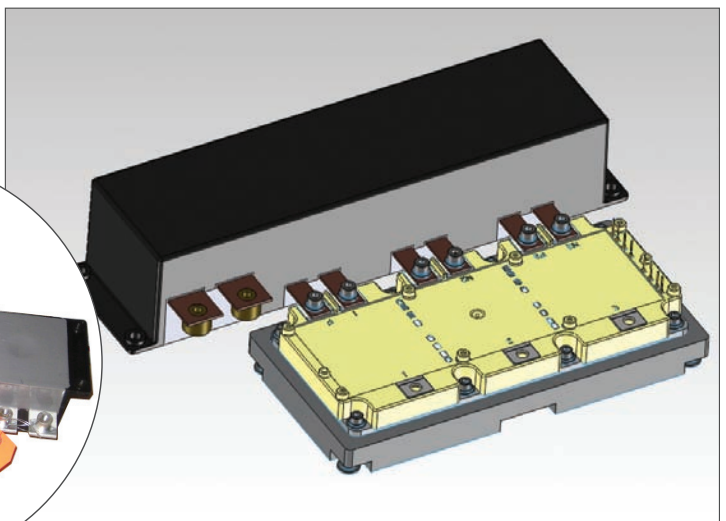


SBE Part #: 700A105
Description: 1000 μ F – 450Vdc or
 750 μ F – 600Vdc
Outline Dim.: 276 x 125 x 51mm

Note: Concept drawing shown with optional bus structure



SBE Part #: 700A109
Description: 1000 μ F – 450Vdc or
 750 μ F – 600Vdc
Outline Dim.: 315 x 81 x 62mm



SBE reserves the right to amend design data

450 Vdc **SBE Part #:** 700D529
Description: 500µF
Outline Dimensions: 116 x 48mm

600 Vdc **SBE Part #:** 700D349
Description: 500µF
Outline Dimensions: 160 x 55mm

SBE Part #: 700D348
Description: 1000µF
Outline Dimensions: 215 x 55mm

SBE Part #: 700D523
Description: 1500µF
Outline Dimensions: 267 x 55mm

700 Vdc **SBE Part #:** 700D547
Description: 1000µF
Outline Dimensions: 215 x 55mm

900 Vdc **SBE Part #:** 700D525
Description: 1000µF
Outline Dimensions: 254 x 70mm

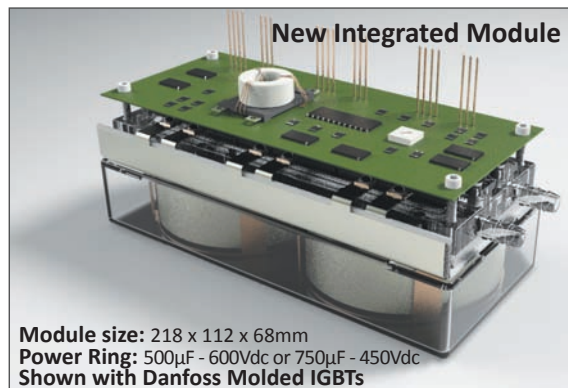
SBE Part #: 700D509
Description: 1500µF
Outline Dimensions: 313 x 70mm



1200 Vdc **SBE Part #:** 700D408
Description: 115µF
Outline Dimensions: 160 x 55mm

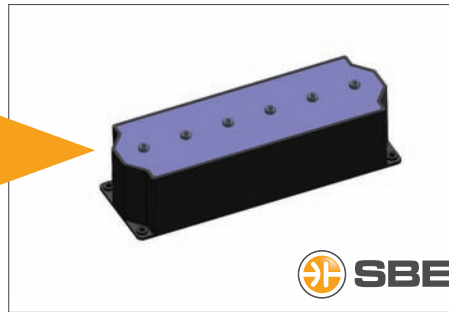
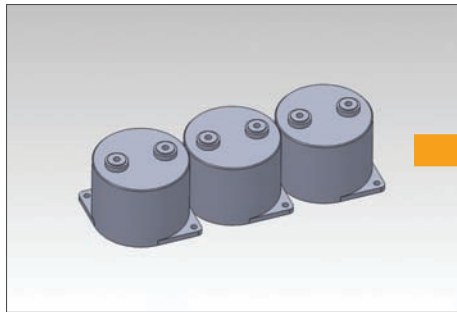
SBE Part #: 700D409
Description: 225µF
Outline Dimensions: 215 x 55mm

Application Examples

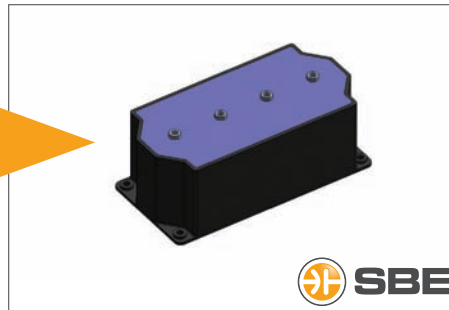
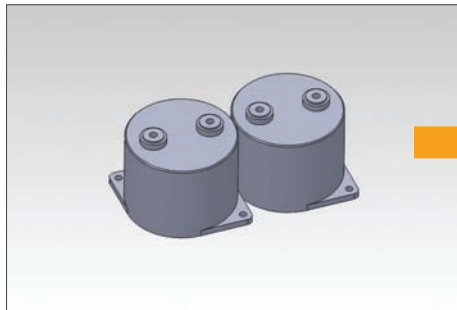


SBE reserves the right to amend design data

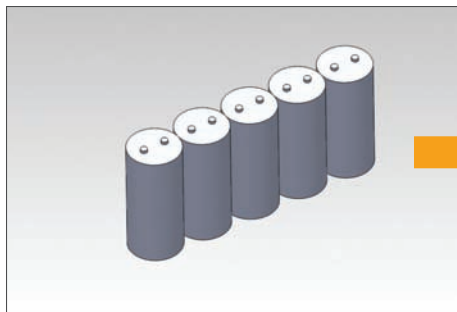
Power Ring “Replacement” Designs - Drop in, Higher Performance (lower ESR, lower ESL, lower losses, and lower Trise)



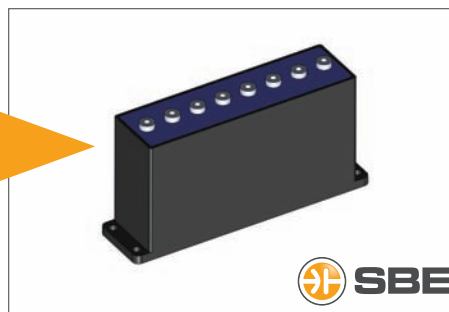
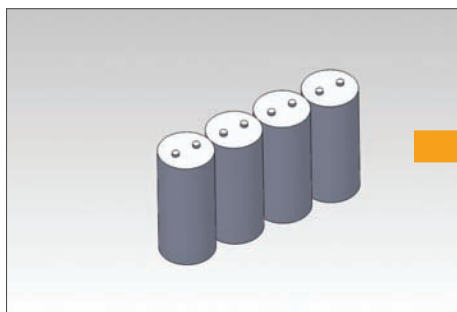
SBE Part #: 700A123
Description: 660 μ F - 600Vdc
Outline Dim.: 250 x 84.5 x 62.5mm



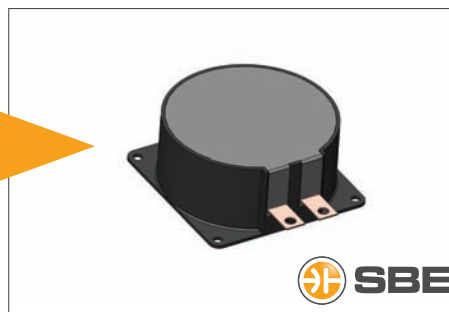
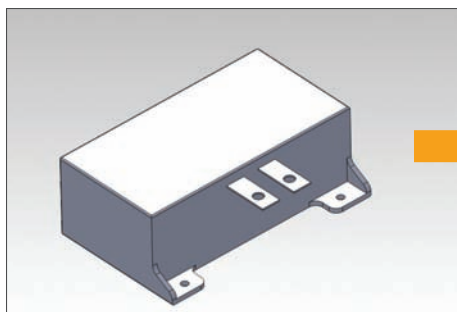
SBE Part #: 700A122
Description: 450 μ F - 600Vdc
Outline Dim.: 170 x 84.5 x 62.5mm



SBE Part #: 700A121
Description: 750 μ F - 450Vdc
Outline Dim.: 240 X 92 X 65 mm



SBE Part #: 700A124
Description: 500 μ F - 450Vdc
Outline Dim.: 180 x 51 x 105mm



SBE Part #: 700D560
Description: 300 μ F - 450Vdc
Outline Dim.: 103 x 103 x 45mm

SBE reserves the right to amend design data

SBE Inc. Headquarters

81 Parker Road, Barre, Vermont 05641 USA
Tel: 1 802 476-4146
Fax: 1 802 661-3950
Email: PowerRing@SBElectronics.com

SBE Inc. Advanced Applications Engineering

200 East 7th Street, Suite 310, Loveland, CO 80537 USA
Tel: 802-661-3471

SBE Inc. China Representative Office

3F, No.638, Xinyang Industrial Park, Xiamen, Fujian, China
Tel: +86-13860191931 (Wayne.Liu)
Email: WayneL@SBElectronics.com



ISO 9001
QMI-SAI Global

SBE reserves the right to amend design data

#SBE-PR-examples-06/12