

Power Ring Film Capacitor™ 400 µF, 450 Vdc

The 700A40794-204 Power Ring assembly is a 400 µF, 450 Vdc dual-winding DC Link Capacitor integrated with a laminar bus. The assembly has an ESR of 440 µΩ at 20 kHz, an ESL less than 8 nH, and a life of more than 10,000 hours at a typical drive cycle for an 80-120 kW inverter.



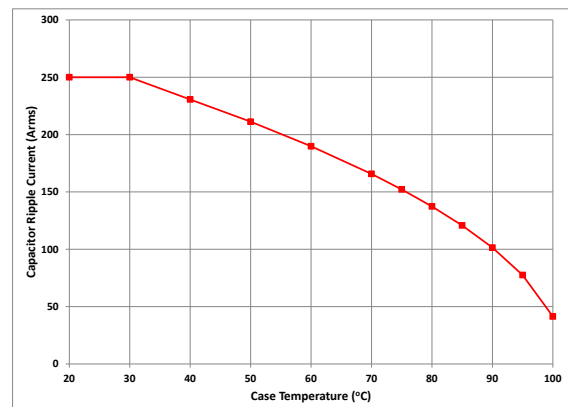
Electrical Specifications

SBE Part #:	700A40794-204
Capacitance/Tolerance:	400 µF ±10%
Dielectric:	Metallized polypropylene film
ESL at IGBT Terminals:	Less than 8 nH
Typical ESR vs. Frequency:	440 µΩ at 20 kHz
Continuous DC Voltage Rating:	450 Vdc up to 85°C (de-rate linearly from 450 Vdc to 300 Vdc from 85°C to 105°C)
Maximum DC Voltage:	Units 100% tested at DC voltage of 560 Vdc for 2 minutes at 25°C
Operating Temperature:	-40°C to +105°C
Maximum Peak Current:	250 Arms (not to exceed 2 minutes and 85°C hotspot at 500 Vdc)

Mechanical Specifications

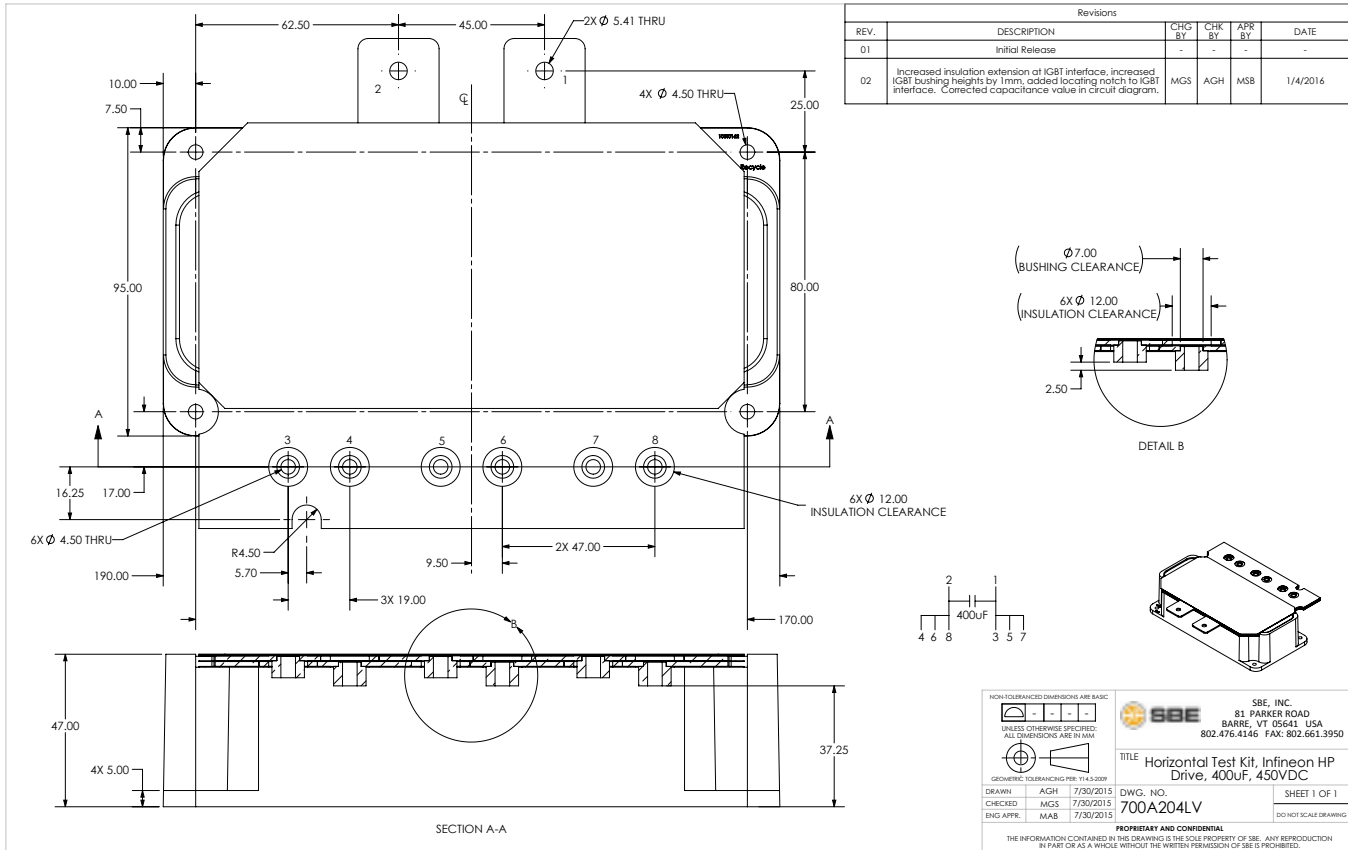
Dimensions:	See layout drawing for details										
Bus:	Tin plated copper, 1.50 mm thick										
Packaging:	Polycarbonate enclosure encapsulated with RTV										
IGBT Connection Type:	Thru-hole connections for Infineon HP Drive™										
Construction:	Dual windings integrated to a laminar bus										
Marking:	<table border="0"> <tr> <td>SBE</td> <td>SBE company identification</td> </tr> <tr> <td>700A204</td> <td>SBE "short form" part number</td> </tr> <tr> <td>400 µF ±10%</td> <td>Capacitance value and tolerance</td> </tr> <tr> <td>450 Vdc</td> <td>DC voltage rating</td> </tr> <tr> <td>yyww-lot#-unit</td> <td>Serial number (date code, lot number, unit number)</td> </tr> </table>	SBE	SBE company identification	700A204	SBE "short form" part number	400 µF ±10%	Capacitance value and tolerance	450 Vdc	DC voltage rating	yyww-lot#-unit	Serial number (date code, lot number, unit number)
SBE	SBE company identification										
700A204	SBE "short form" part number										
400 µF ±10%	Capacitance value and tolerance										
450 Vdc	DC voltage rating										
yyww-lot#-unit	Serial number (date code, lot number, unit number)										

Rating Curve:



Ripple current versus case temperature for 10,000 hour life with continuous operation at 450V.

Layout Details:



For proper installation of this product view our guide at:
<http://www.sbelectronics.com/products/infineon-hp-drive-6-pack-compatible-test-kits/>

Contact SBE Inc. to discuss your specific requirements.

SBE reserves the right to amend design data