

Technical Data Sheet



Electrical Specifications

Capacitance/Tolerance: 425 μ F, $\pm 10\%$

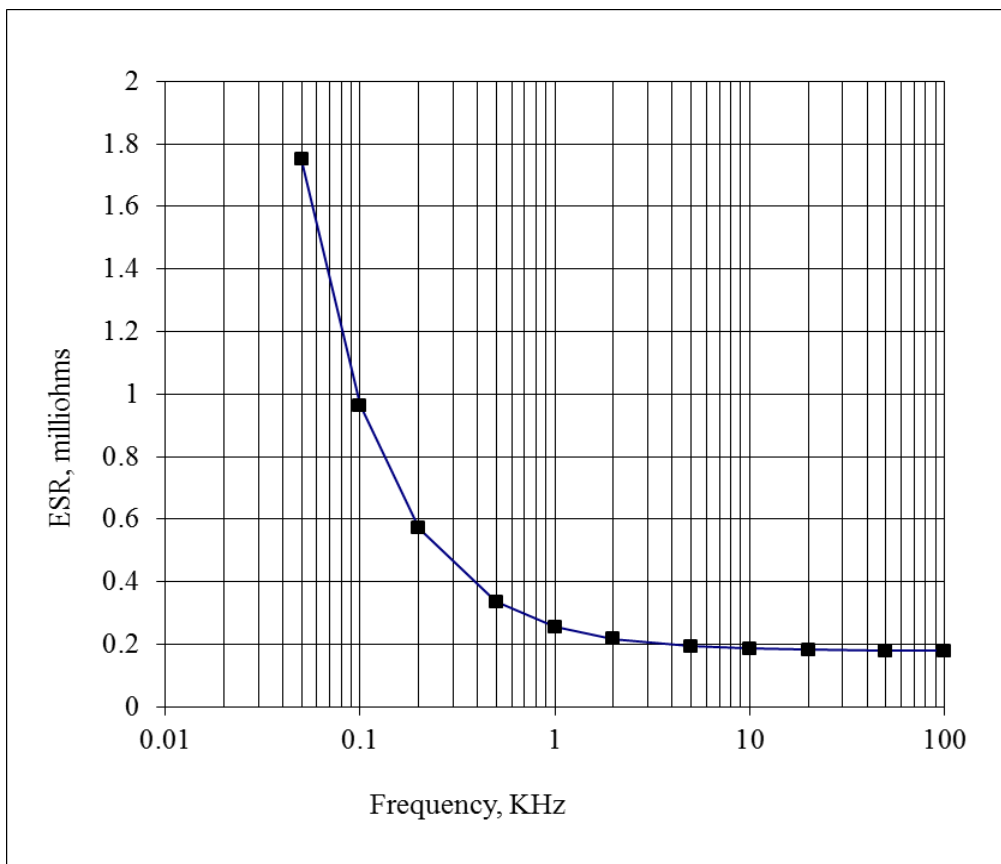
DC Voltage Rating: 900 VDC

Dielectric/Construction: Metallized Polypropylene film. Single section design

Dielectric

Withstand Voltage: Units 100% tested at a DC potential of 1125 Volts for two minutes at +25°C

ESR vs. Frequency:



Electrical Specifications (cont'd)

ESL: Less than 5 nH in a suitable laminar bus structure

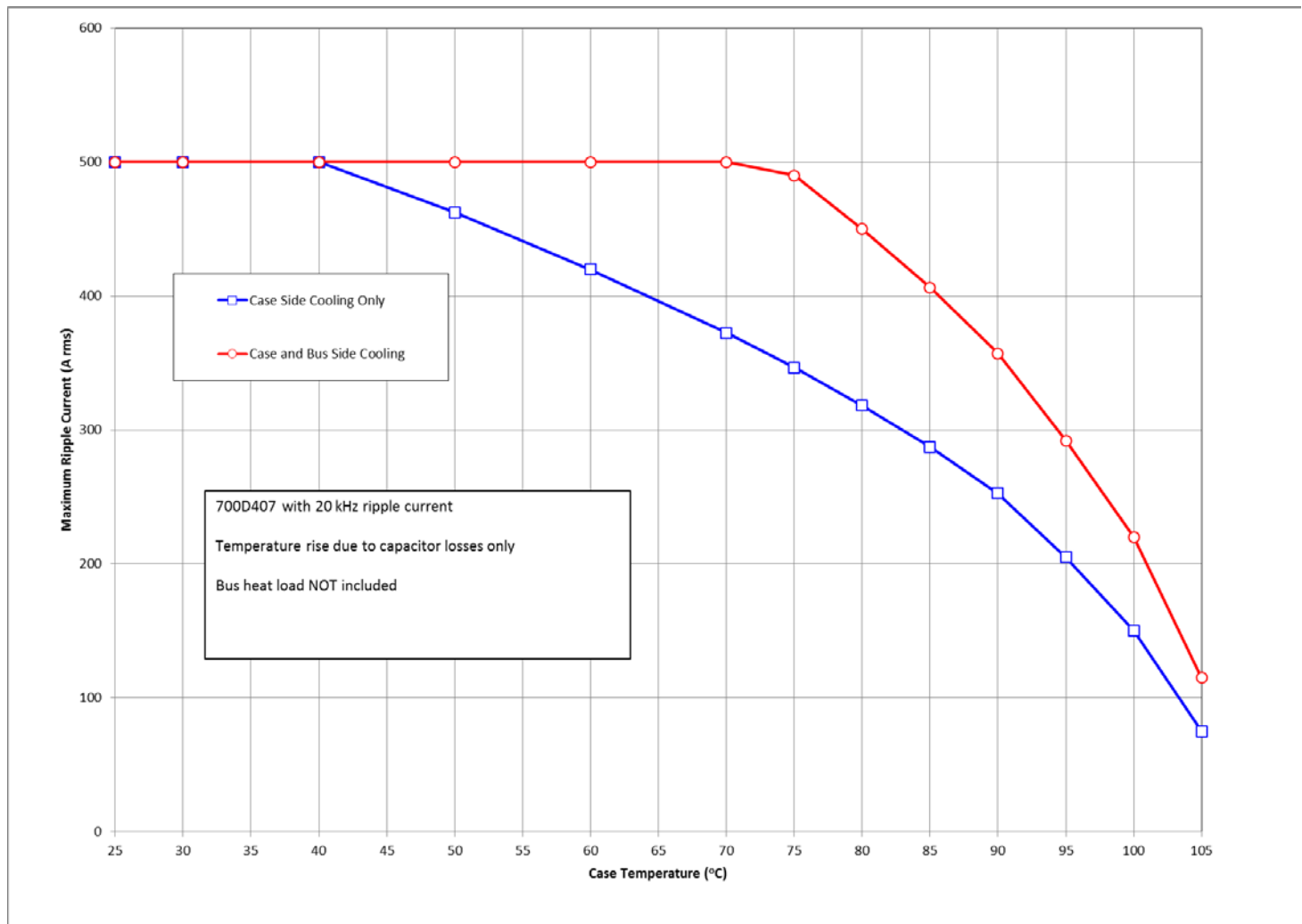
Thermal resistance: 0.92°C/W (case side cooling only)
0.44°C/W (case and bus side cooling)

Operating Temperature: -40°C to +85°C at full DC voltage rating

Voltage, Temperature De-rating: De-rate voltage linearly to 700 Volts from +85°C to +107°C, with respect to hotspot temperature

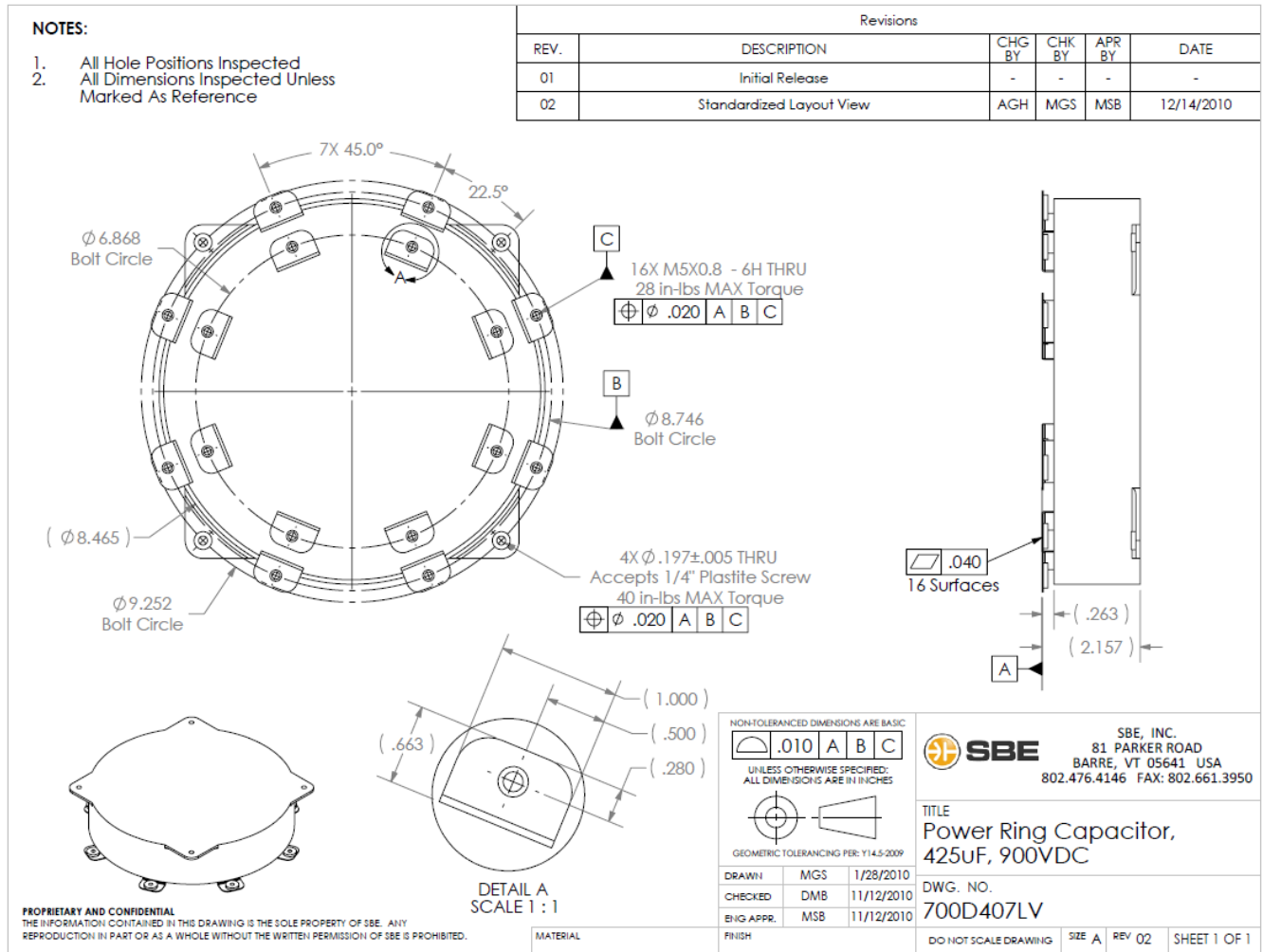
System Fault Current Rating: 10,000 Amps maximum (external to the capacitor)

RMS Current Rating:



Mechanical Specifications

Dimensions: See Layout Drawing below for details.
Terminals: Tin plated copper, 0.032" thick
Encapsulation: Molded polymeric case potted with RTV silicone
Marking: SBE SBE Company Identification
 700D407 Unique SBE Part Number
 425 μ F \pm 10% Capacitance value and Tolerance
 900 VDC DC Voltage Rating
 yyww-lot#-unit Serial Number (date code, lot number, unit number)



Rev. 1/21/13
SBE Inc., Power Ring Division
 81 Parker Road • Barre, VT 05641 USA
 Tel: 802-476-4146 • Fax: 802-661-3950
 Email: PowerRing@SBElectronics.com
 Web: www.SBElectronics.com



ISO 9001
QMI-SAI Global

At the *Leading Edge* of Film Capacitor Technology™