

Technical Data Sheet



Electrical Specifications

Capacitance/Tolerance: 140 μ F, \pm 10%

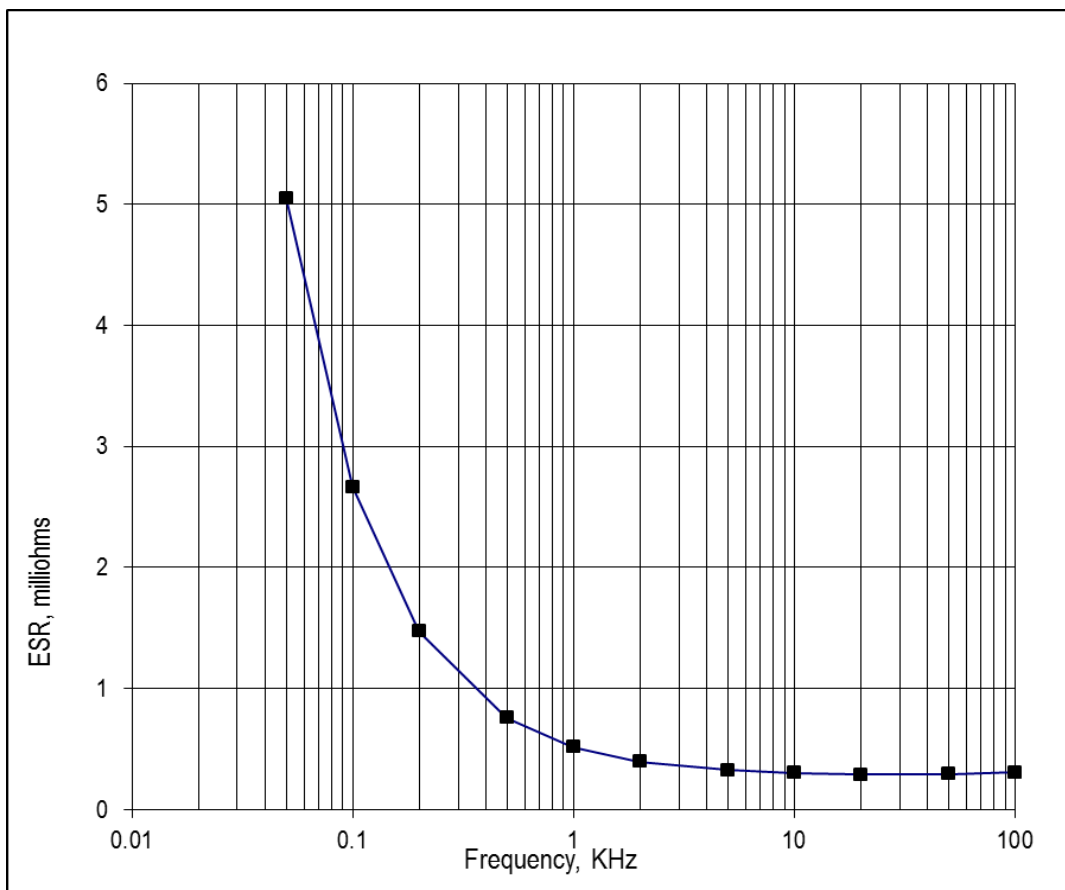
DC Voltage Rating: 1500 VDC

Dielectric/Construction: Metallized Polypropylene film. Single section design

Dielectric

Withstand Voltage: Units 100% tested at a DC potential of 1875 Volts for two minutes at +25°C

ESR vs. Frequency:



Electrical Specifications (cont'd)

ESL: Less than 5 nH in a suitable laminar bus structure

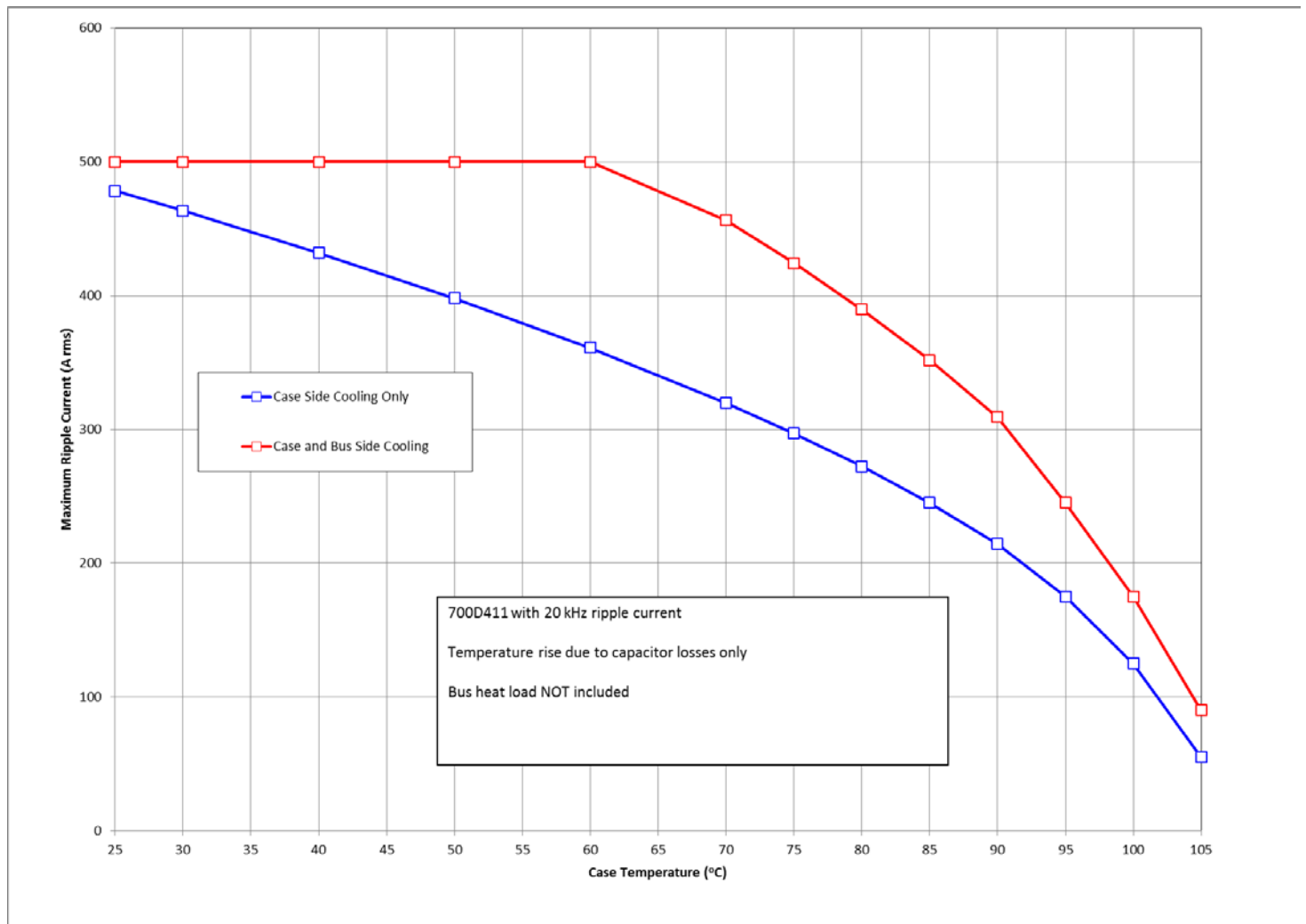
Thermal resistance: 0.9°C/W (case side cooling only)
0.44°C/W (case and bus side cooling)

Operating Temperature: -40°C to +85°C at full DC voltage rating

Voltage, Temperature De-rating: De-rate voltage linearly to 1300 Volts from +85°C to +107°C, with respect to hotspot temperature

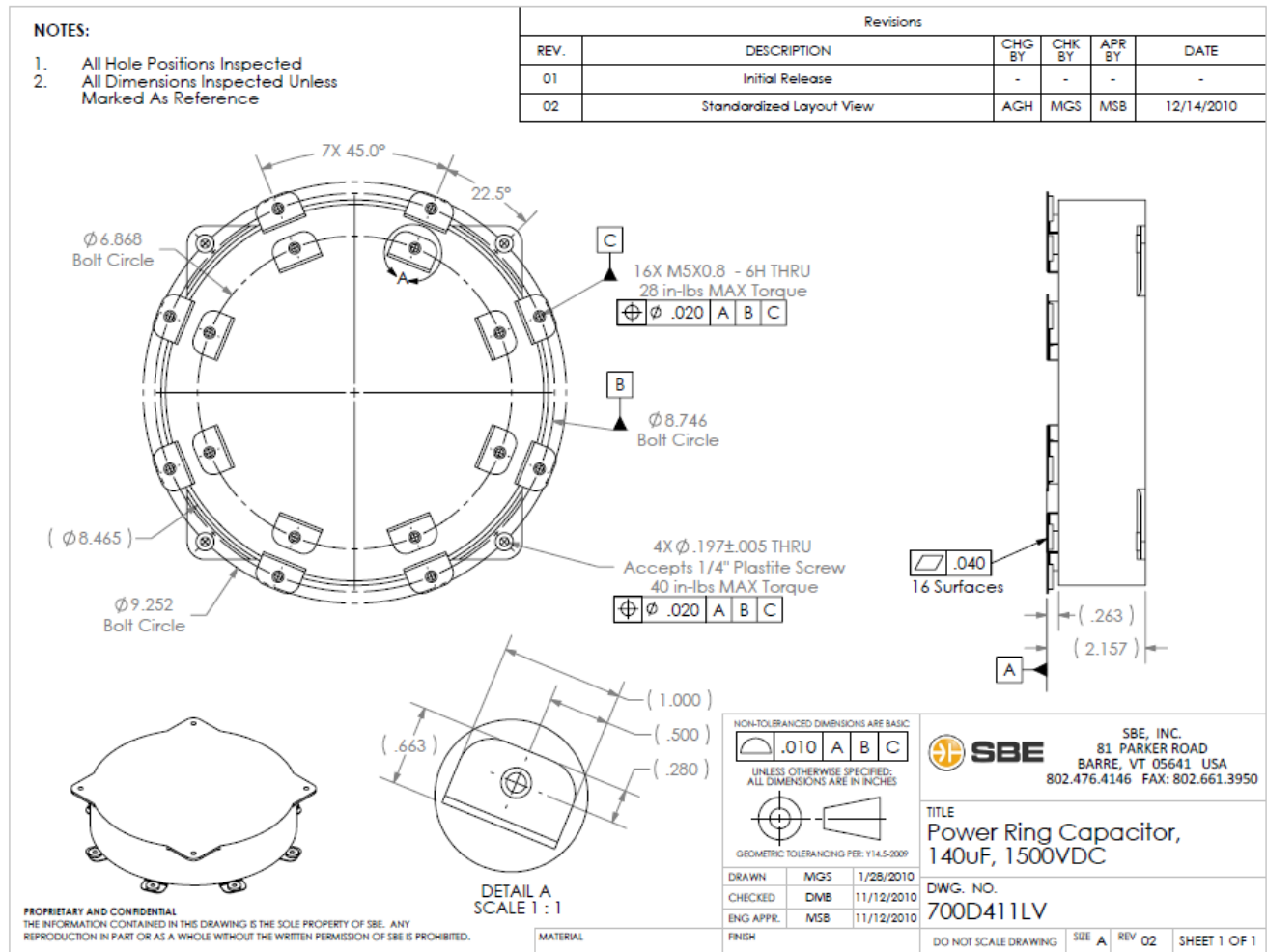
System Fault Current Rating: 10,000 Amps maximum (external to the capacitor)

RMS Current Rating:



Mechanical Specifications

Dimensions:	See Layout Drawing below for details.		
Terminals:	Tin plated copper, 0.032" thick		
Encapsulation:	Molded polymeric case potted with RTV silicone		
Marking:	SBE	SBE Company Identification	
	700D411	Unique SBE Part Number	
	140 μ F \pm 10%	Capacitance value and Tolerance	
	1500 VDC	DC Voltage Rating	
	yyww-lot#-unit	Serial Number (date code, lot number, unit number)	



Rev. 1/21/13

SBE Inc., Power Ring Division
81 Parker Road • Barre, VT 05641 USA
Tel: 802-476-4146 • Fax: 802-661-3950
Email: PowerRing@SBElectronics.com
Web: www.SBElectronics.com



ISO 9001
QMI-SAI Global

At the *Leading Edge* of Film Capacitor Technology™