

## Power Ring Film Capacitor™ 260 $\mu$ F, 750 Vdc

*The 700A26797-245 Power Ring assembly is a 260  $\mu$ F, 750 Vdc dual-winding DC Link Capacitor integrated with a laminar bus. The assembly has an ESR of 900 micro-Ohms at 20kHz, an ESL of less than 8nH and a life of more than 10,000 hours at a typical drive cycle for an 80-120 kW inverter.*



### Electrical Specifications

<b>SBE Part #:</b>	700A26797-245
<b>Capacitance/Tolerance:</b>	260 $\mu$ F $\pm$ 10%
<b>DC Voltage Rating:</b>	750 Vdc
<b>Dielectric:</b>	Metallized polypropylene film
<b>ESL at IGBT Terminals:</b>	Less than 8 nH

**Typical ESR vs. Frequency:** 900  $\mu$  $\Omega$  at 20 kHz

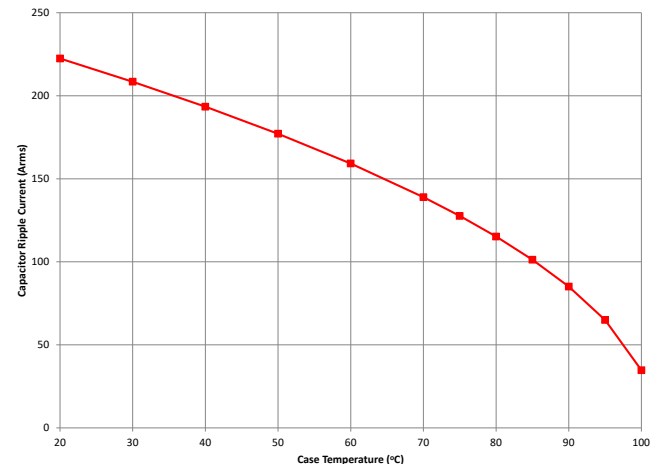
**Continuous DC Voltage Rating:** 750 Vdc up to 85°C (de-rate linearly from 750 to 500 Vdc from 85°C to 105°C)

**Dielectric Withstand Test Voltage:** Units 100% tested at DC voltage of 950 Vdc for 2 minutes at 25°C

**Operating Temperature:** -40°C to +105°C

**Maximum Peak Current:** 200 Arms (not to exceed 2 minutes and 85°C hotspot at 750 Vdc)

### RMS Current Rating

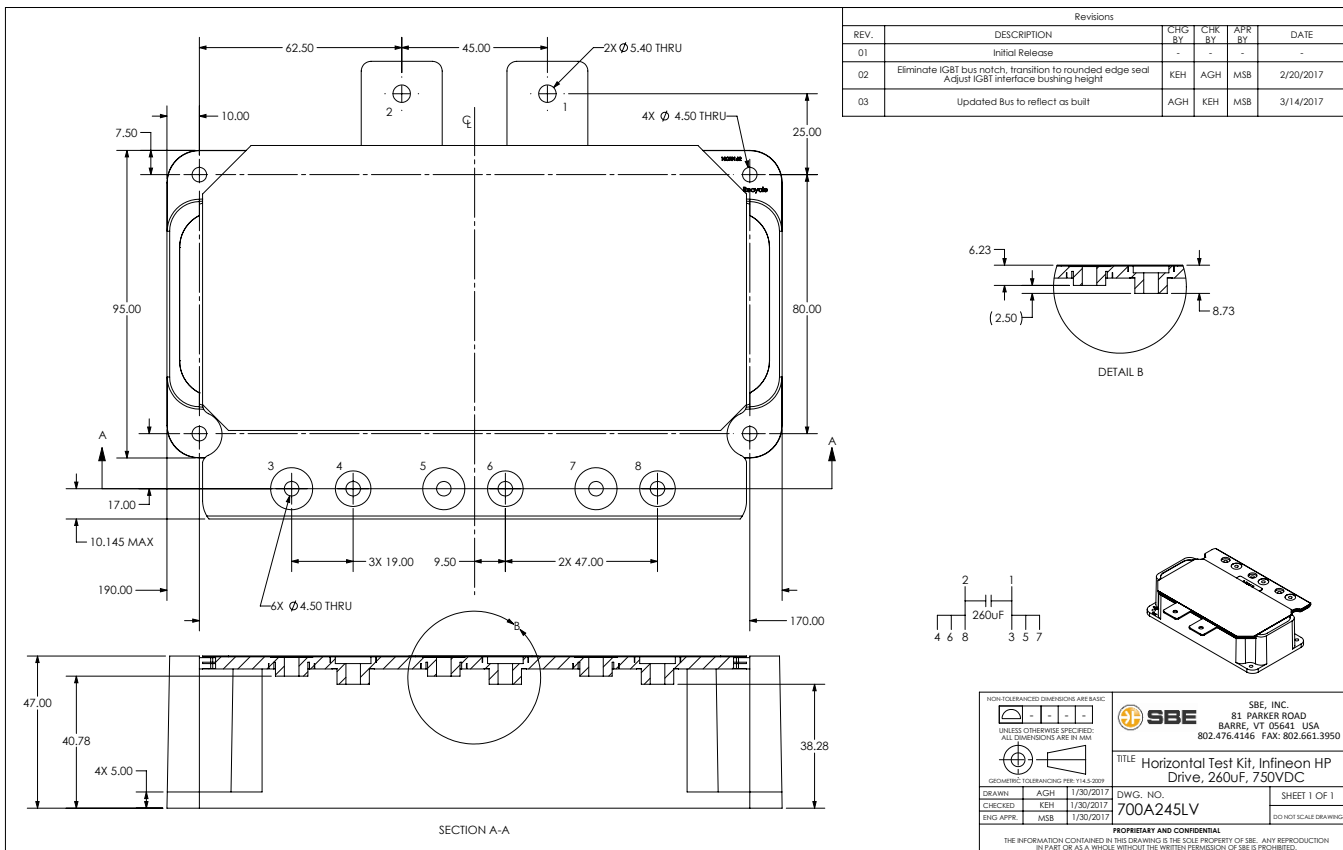


Ripple current versus case temperature for 10,000 hour life with continuous operation at 700 Vdc.

## Mechanical Specifications

<b>Dimensions:</b>	See layout drawing for details	<b>Marking:</b>	SBE 700A245 260 $\mu$ F $\pm$ 10%	SBE company identification SBE "short form" part number Capacitance value and tolerance
<b>Bus Structure:</b>	Tin plated copper, 0.060" (1.50 mm) thick		750 Vdc yyww-lot#-unit	DC voltage rating Serial number (date code, lot number, unit number)
<b>Packaging:</b>	Polycarbonate enclosure encapsulated with RTV			
<b>IGBT Connection Type:</b>	Thru-hole connections for Infineon HP Drive™			
<b>Construction:</b>	Dual windings integrated to a laminar bus			

## Layout Details:



Contact SBE Inc. to discuss your specific requirements.



SBE reserves the right to amend design data