

Power Ring Film Capacitor™ 1000 µF, 600 Vdc

The 700A10896-348 Power Ring is a 600Vdc, 1000 µF DC Link Capacitor with an ESR of 125 micro-Ohms at 20kHz and an ESL of less than 15nH.



Electrical Specifications

SBE Part #: 700A10896-348

Capacitance/Tolerance: 1000 µF ±10%

DC Voltage Rating: 600 Vdc

Dielectric/Construction: Metallized polypropylene.
Single section design
integrated to laminar bus

Dielectric Withstand: Units 100% tested at DC potential of 750 Volts for 2 minutes at 25°C

ESL at Output Tabs: Less than 15 nH for unit as shown (value does not include effects from additional hardware, bus adaptor, etc.)

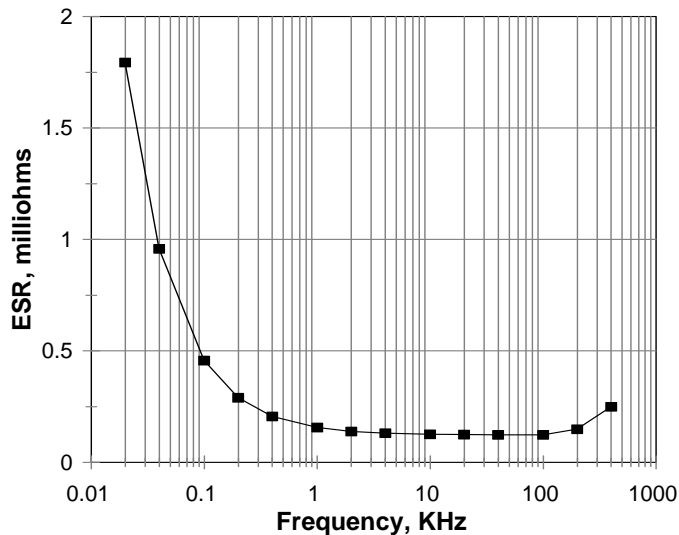
Thermal Resistance: 0.89°C/W (case cooling only) and 0.41°C/W (case and bus side cooling only)

Operating Temperature: -40°C to +85°C hotspot temperature at full DC voltage rating

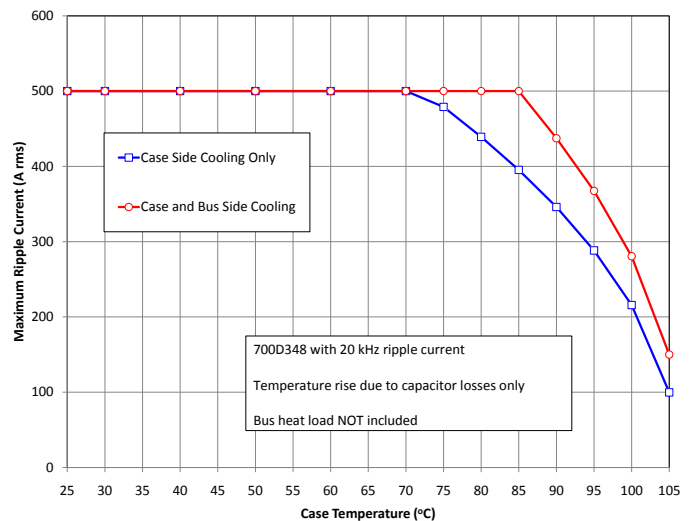
Voltage, Temperature De-rating: De-rate voltage linearly to 400 Vdc from +85°C to +107°C with respect to hotspot temperature

System Fault Current Rating (external to the capacitor): 10,000 Amps maximum

Typical ESR vs. Frequency:



RMS Current Rating:



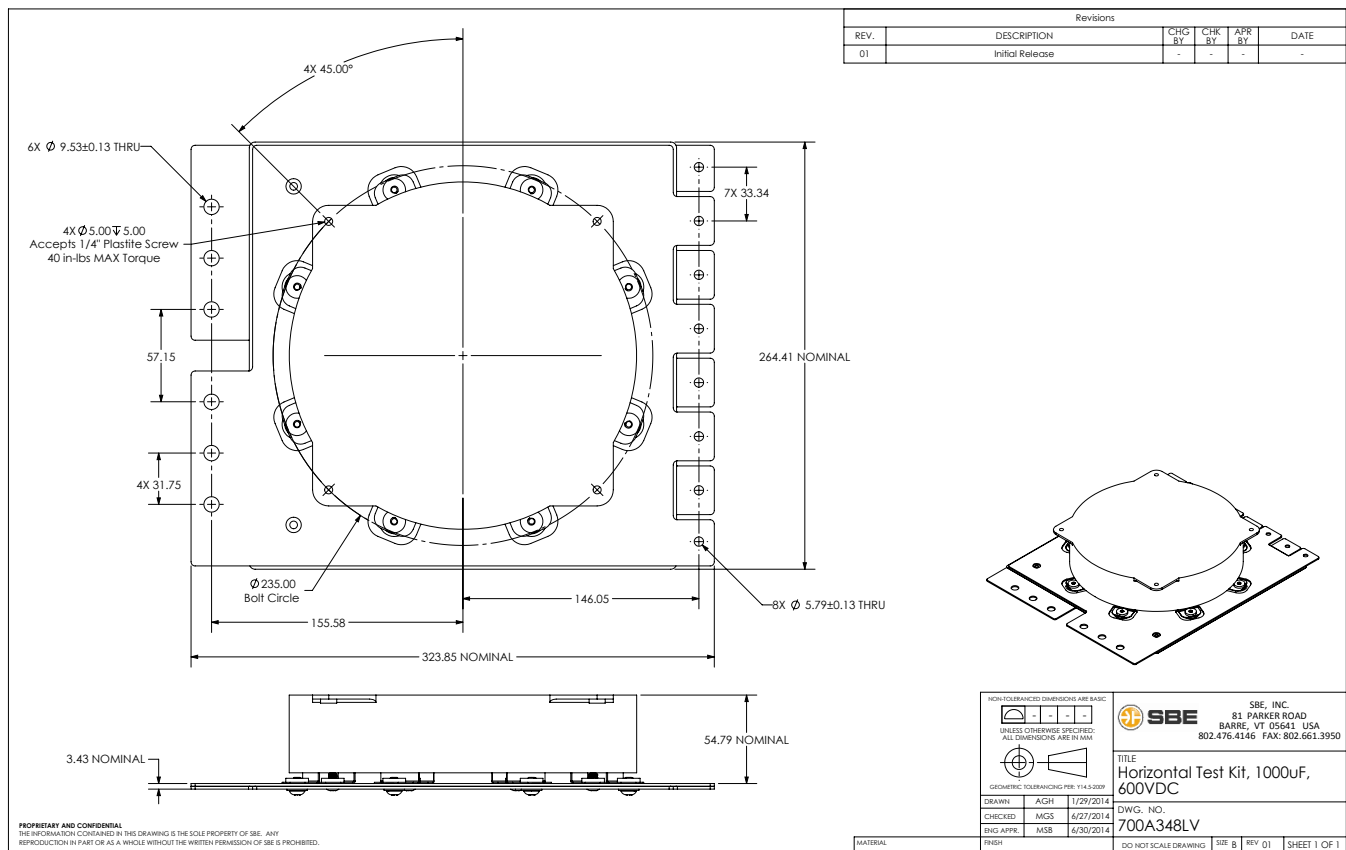
SBE reserves the right to amend design data

Mechanical Specifications

Dimensions: See layout drawing for details
Bus/Terminals: Tin plated copper,
 0.136" thick
Encapsulation: Capacitors potted with RTV

Marking:
 SBE Inc. SBE company identification
 700A348 SBE "short form" part number
 1000 μ F \pm 10% Capacitance value and tolerance
 600 Vdc DC voltage rating
 yyww-lot#-unit Serial number (date code, lot number, unit number)

Layout Details:



Contact SBE Inc. to discuss your specific requirements.

#SBE-PR-700A348-07/14

SBE reserves the right to amend design data