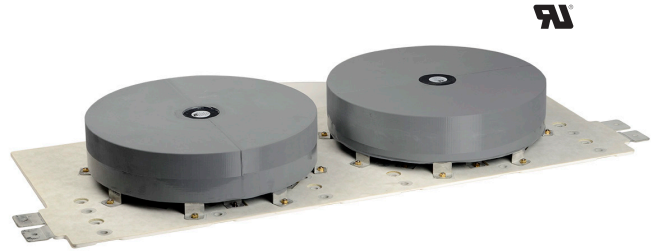


Power Ring Film Capacitor™ 3000 μ F, 1100 Vdc

The 700A163 Power Ring is a 1100 Vdc, 3000 μ F DC Link Capacitor with an ESR of 150 micro-Ohms at 20 kHz and an ESL of 10 nH.



Electrical Specifications

SBE Part #: 700A163

Capacitance/Tolerance: 3000 μ F \pm 10%

DC Voltage Rating: 1100 Vdc

Dielectric/Construction: Metallized polypropylene.
Single section design.
2 - windings

Dielectric Withstand Voltage: Units 100% tested at DC potential of 1275 Volts for two minutes at 25°C

UL Recognition: UL 810

ESL: 10 nH at the typical "half bridge" type package connection

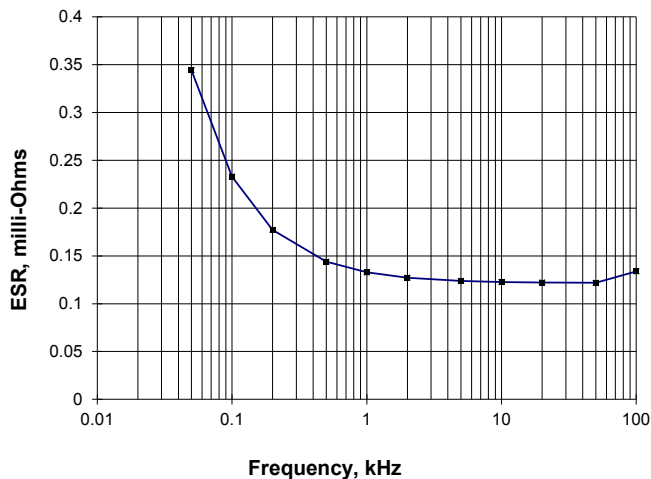
Thermal Resistance: 0.34°C/W (case side cooling only)
0.17°C/W (case and bus side cooling only)

Operating Temperature: -40°C to +85°C
hotspot temperature at full DC voltage rating

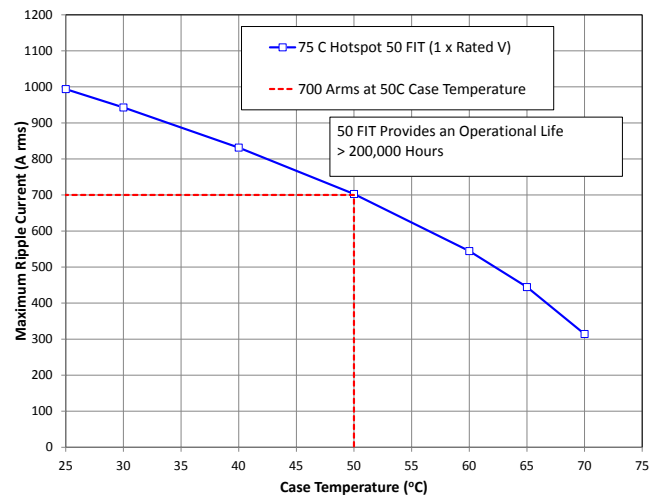
Voltage, Temperature De-rating: De-rate voltage linearly to 850 Volts from +85°C to +107°C, with respect to hotspot temperature

System Fault Current Rating: 20,000 Amps maximum (external to the capacitor)

Typical ESR vs. Frequency:



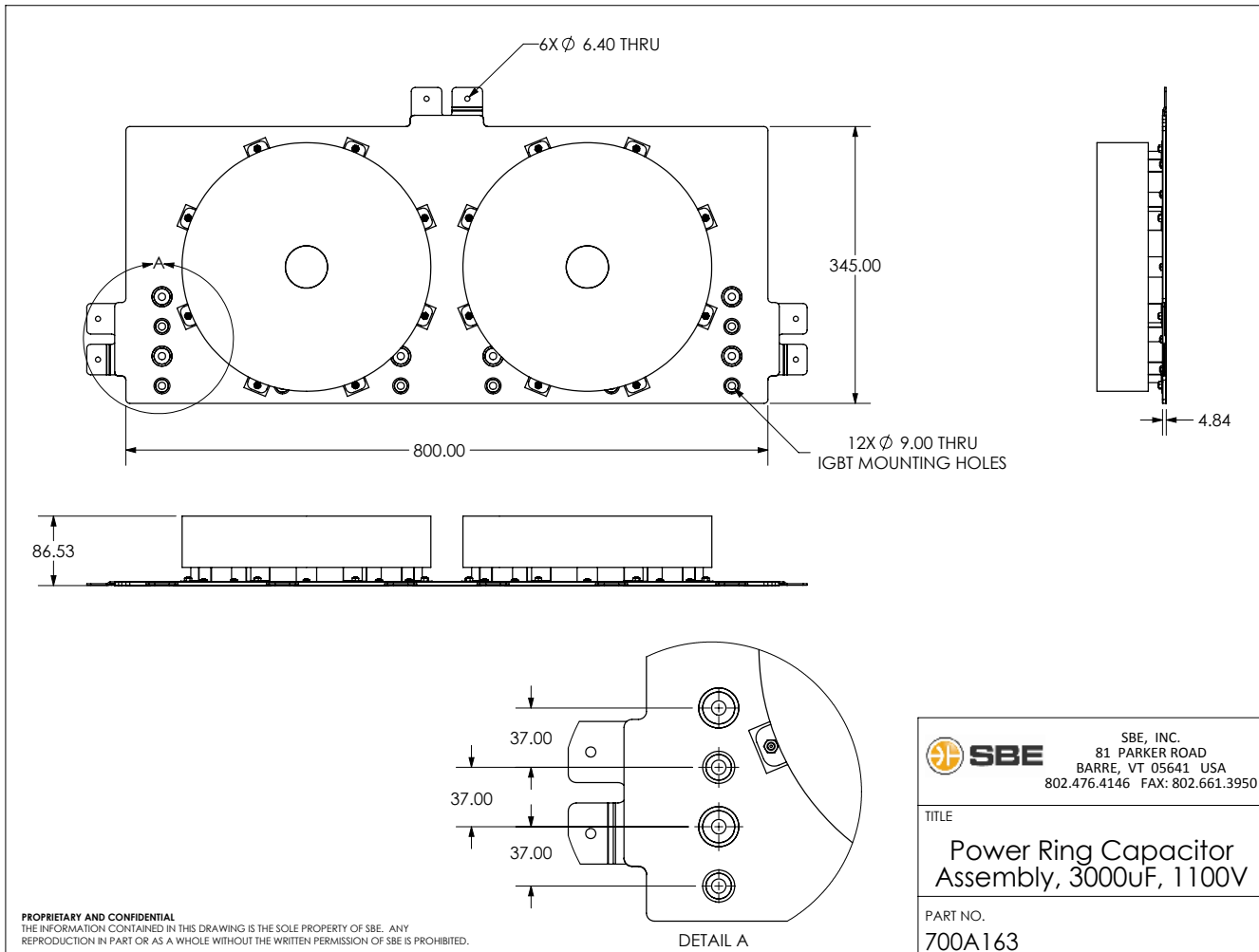
RMS Current Rating:



Mechanical Specifications

Dimensions:	See layout drawing for details	Marking: SBE	SBE company identification
Terminals:	Tin plated copper, 0.032" thick	700A163	Unique SBE part number
Bus Structure:	Tin plated copper, 0.080" thick each plate. Nomex, 0.011" thick - UL 94-V0	3000 μ F \pm 10%	Capacitance value and tolerance
Encapsulation:	UL recognized construction Capacitors potted with RTV case - UL 94-V0	1100 Vdc yyww-lot#-unit	DC voltage rating Serial number (date code, lot number, unit number)

Layout Details:



Contact SBE Inc. to discuss your specific requirements.

SBE reserves the right to amend design data