

PRELIMINARY VERSION

**Integrated Capacitor/bus assembly
320 μ F, 750 Vdc with DuPont Teijin
PEN HV™ film for operation to 125°C**

The 906A32797-105 Power Ring assembly is a 320 μ F, 750 Vdc dual-winding DC Link Capacitor integrated with a laminar bus. The assembly has an ESR of 840 $\mu\Omega$ at 20kHz, an ESL of less than 8nH and a life of more than 10,000 hours at a typical drive cycle for an 80-120 kW inverter.



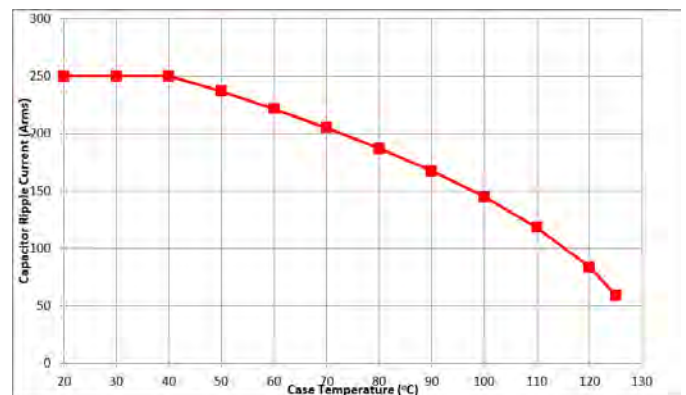
Electrical Specifications

SBE Part #:	906A32797-105
Capacitance/Tolerance:	320 μ F \pm 10%
Dielectric:	Metallized high temp film
ESL at IGBT Terminals:	Less than 8 nH
Continuous DC Voltage:	750 Vdc up to 125°C (derate linearly from 750 Vdc to 450 Vdc from 125°C to 150°C hotspot)
Typical ESR vs. Frequency:	840 $\mu\Omega$ at 20 kHz
Maximum DC Voltage:	Units 100% tested at DC voltage of 940 Vdc for 2 minutes at 25°C
Operating Temperature:	-40°C to +125°C
Maximum Peak Current:	250 Arms (not to exceed 2 minutes and 130°C hotspot at 750 Vdc)
Operating Ranges (Typical Drive Cycle):	700 V < Vdc < 800 V 75Arms < I _{ripple} < 150Arms 50°C < T _{coolant} < 125°C

Mechanical Specifications

Dimensions:	See layout drawing for details
Bus Structure:	Tin plated copper, 0.060" (1.50 mm) thick
Packaging:	Polycarbonate enclosure encapsulated with RTV
IGBT Connection Type:	Thru-hole connections for Infineon HYBRIDPACK™ Drive Module
Construction:	Dual windings integrated to a laminar bus

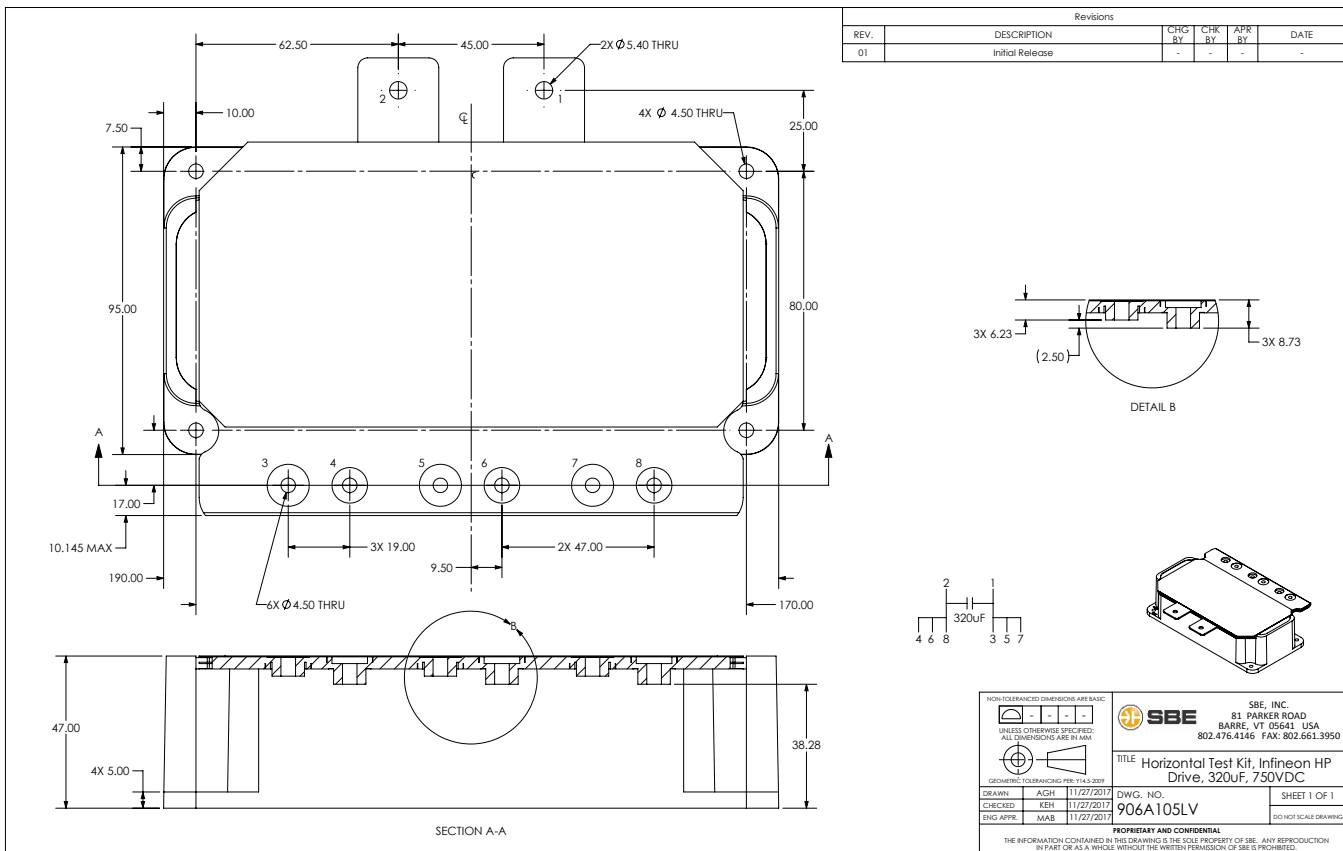
RMS Current Rating



Ripple current versus average case temperature to achieve 10,000 hour life for continuous operation.

Marking:

SBE	SBE company identification
906A105	SBE "short form" part number
320 μ F \pm 10%	Capacitance value and tolerance
750 Vdc	DC voltage rating
yyww-lot#-unit	Serial number (date code, lot number, unit number)

Layout Details:


Contact SBE Inc. to discuss your specific requirements.



#SBE-PR-906A105-12/17

SBE reserves the right to amend design data